



Biggleswade Campus Prospectus

2023-2024




Introduction

This School is a registered and accredited Independent School established to provide a quality education to the UK community and, in particular, to Brethren students.

The School's Ethos, Values Statement and Guiding Principles govern the School, and are reflected in a series of policies, procedures and handbooks which have been developed to meet statutory and registration requirements and are to be adhered to in all aspects of the operation of the School.

Contents



About OneSchool Global	4
OneSchool Global Ethos	5
OneSchool Global Vision and Mission Statements	6
OneSchool Global Values	7
Welcome	8
History	10
Global House System	11
Our Curriculum	14
OneSchool Awards	15
Career Advancement Programme	16
Policies	18
Teachers and Staffing	19
School Information	20
Testimonials	22

About OneSchool Global UK

OneSchool Global is a global school, with over 130 campuses in 20 countries, including cities such as New York, Paris, Sydney, Rome, Auckland, Copenhagen, Los Angeles and San Francisco.

With an innovative approach to learning, delivered in cutting-edge, technology-empowered physical and digital learning environments, OneSchool Global is preparing life-ready students who learn how to learn.

Our self-directed learning model places students at the centre of all that we do. We challenge traditional and dated pedagogy and embrace technology to deliver the best possible learning outcomes for our students.

OneSchool Global recruits and develops high quality teachers. Our teachers partner with our students in their learning and rather than being considered the 'sage on the stage', play a 'guide on the side role' to support students.

Our in-house Teacher Academy provides teachers with the training they need to be the best they can be. We provide teachers with the skills they need to be successful at OneSchool Global and skills that will make them highly capable and competent in teaching in a digital world.

OneSchool Global is a school that lives its values and is guided by the School's ethos. The School is generously supported via the donation of time and financial support from members of the Plymouth Brethren Christian Church.



[Click on the OneSchool logo to learn more about how this cutting-edge schooling system was inspired and how this awesome vision is being realised.](#)





OneSchool Global Ethos

At OneSchool Global, we are committed to a culture where students are encouraged to develop their full potential and acquire the discipline of learning how to learn while upholding Christian teachings and beliefs.

The truth and authority of the Holy Bible and strong family values underpin the commitment of the School to provide quality in every facet of education - curriculum, teachers, facilities, management, and discipline - in a safe and caring environment.

OneSchool Global Vision Statement



A global education ecosystem that develops life-ready students who learn how to learn and achieve.

To ensure our students are life-ready, we need to teach differently. To be life-ready in today's world, our students need to learn how to learn. To be life ready, our students need to develop independent and critical thinking skills, and skills such as teamwork and collaboration

It is these skills that form an aptitude base that allows a student to adapt. Most importantly, these critical skills are transferable. When industry changes, when entire fields of work and job types are no longer required, it will be the life-ready, critical thinkers who stand the test of time and find new ways to add value.

We are prepared to do things differently at OneSchool Global to deliver on this vision. We challenge traditional and outdated pedagogical models. Our learning centres, the way we embed technology in them, and ultimately our students, are a testament to this.

OneSchool Global Mission Statement



“Learning to Learn”

The School is committed to creating and delivering learning programmes that meet the educational needs of each student, and to nurture the attitudes and skills necessary for the continual learning and personal growth throughout life.

“Learning to Learn” means to use learning as a tool whereby students are equipped with the ability to think critically, process information perceptually, analyse data accurately, and evaluate situations intelligently in order that they fulfil their true potential.



OneSchool Global Values



At OneSchool Global each student, parent and staff member shall uphold the values of the School which include:

Integrity – uprightness, honesty and decorous conduct, governed by the Holy Bible,

Care and Compassion – kindness, consideration and generosity to all,

Respect – for all people, property, opinions and those in authority,

Responsibility – for our actions, progress and the environment and,

Commitment – to self-discipline and the pursuit of excellence.



Campus Principal Mr Mark Little



Welcome Message



Welcome to OneSchool Global UK Biggleswade Campus

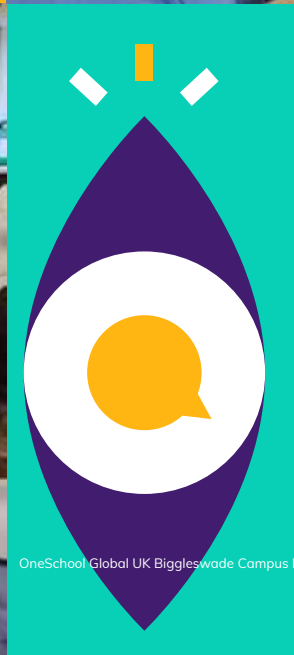
Biggleswade Campus is moving from strength to strength. Our commitment to delivering an outstanding education opportunity to every student, coupled with our ongoing affiliation with OneSchool Global, continues to raise our objectives and aspirations as a progressive and forward thinking organisation capable of preparing our students for the future.

The 'Learning to Learn' mantra gives meaning and direction to our strategic and tactical goals, and has a daily impact on students, staff and parents. Enabling our learners to be self-directed is a key objective, not just while they are in their education with Biggleswade Campus, but as a key skill that will be essential for life.

Mr Simon Lewis

Lead Campus Administrator







Our History

Biggleswade Campus is a successful OneSchool Global campus that opened in September 2014, combining two former campuses onto one site - Barnet Campus and Cheshunt Primary Campus.

A further merge took place in September 2018, with Cambridge Campus joining Biggleswade Campus. Both schools were previously inspected with excellent outcomes, and the merged school is now going from strength to strength, developing the OneSchool skills and following the OneSchool vision.

We enter 2023-2024 with confidence, boosted by excellent exam results that are a tribute to the hard work of us all.

The Global House System



The Global House System is based around the ethos of inclusion and encouraging teamwork.

It is designed to reward academic work, effort, sporting achievements and good citizenship. It is the role of the House System to embrace all students and provide a climate of success for all.

The Global House System consists of three houses each with an assigned colour as shown below. These houses are run globally throughout our affiliated schools, meaning that we can encourage teamwork with other regions, not just within our campus, thus enhancing our students' desire to strive for their best, due to a much wider area of healthy and constructive competition.

Each student is assigned to a House and will normally remain in that House for his/her duration at the campus. Many house events and competitions are run which link to learning and help foster both teamwork and self-directed learning skills. The Global House System encourages healthy participation in activities and is well supported by staff and student leaders.



Charitable Fundraising

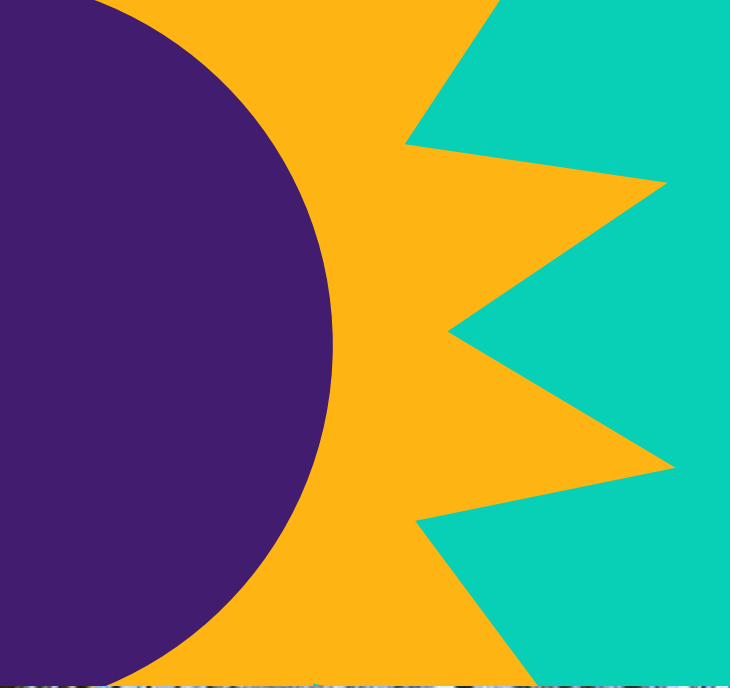


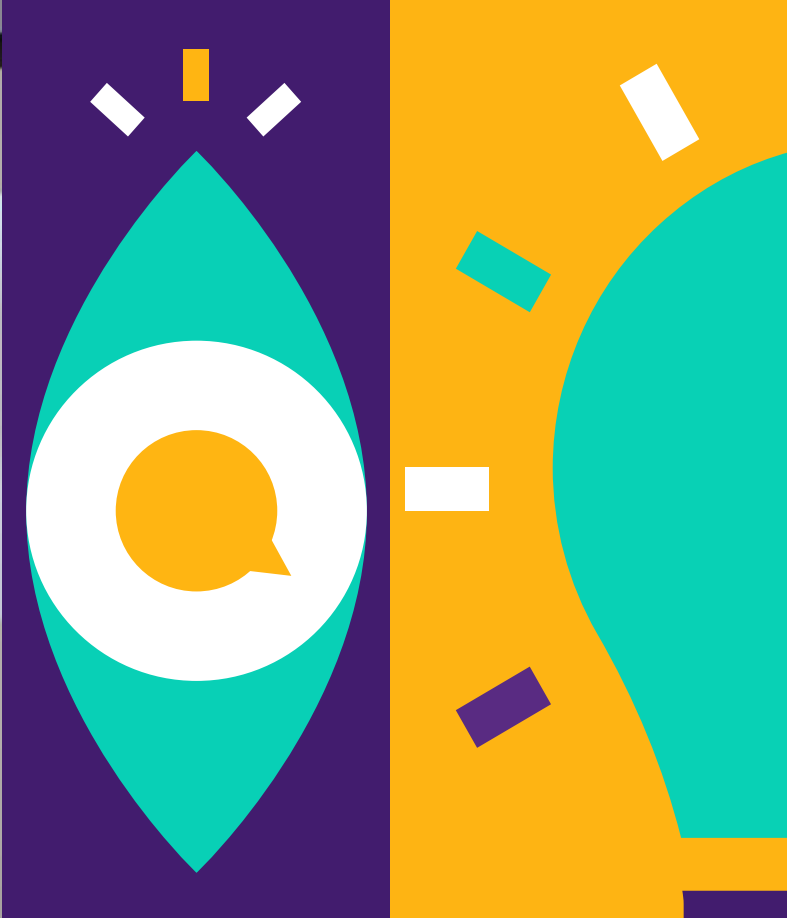
At Biggleswade Campus the whole community is committed to helping those less fortunate than ourselves.

There is a strong, student-led culture for fundraising and charity at Biggleswade Campus. The majority of fundraising initiatives are student-led, with representatives from our student council coming up with ideas for school-wide events. Not only does each initiative raise hundreds of pounds for charity, but it also gives students valuable experience in organising and leadership skills.

Charitable donations made recently include:

- Guide Dogs for the Blind Association
- Teenage Cancer Trust
- Young Minds
- Preen
- Royal British Legion
- Leprosy Mission
- Oxfam
- RRT
- Great Ormond Street Hospital (GOSH)





“

I am sending an email simply to let you know how absolutely thrilled we were with our child's GCSE results - beyond our wildest expectations!

”

Our Curriculum



...wholly supports the School's ethos in promoting Christian values and provides a balance, ensuring students develop academically, aesthetically, morally and physically.

Biggleswade Campus has adopted the Curriculum Policy developed by OneSchool Global UK. The curriculum is designed to ensure that every student can realise their potential. The curriculum is assignment-based, enabling the self-directed ambition of the organisation to be fulfilled. All students follow a personalised and challenging curriculum.

Years 3-6

Art
Design & Technology
English
Geography
History
IT
LAMDA
Mathematics
MFL
Music
PSHE
Physical Education
Science

Years 7-8

Art
Citizenship
Design & Technology
English
Geography
History
IT
LAMDA
Mathematics
MFL
PSHE
Physical Education
Science

Years 9-11

Art, Craft & Design
Citizenship
Design & Technology
English
Food & Nutrition
French
Geography
German
History
ICT
LAMDA
Mathematics
PSHE
Physical Education
RSE
Science
Spanish

Years 12-13

All of our students progress to the sixth form and are offered a broad range of curriculum options designed to meet the abilities and aspirations of all our learners.

Cambridge International A Level qualifications are offered in Art & Design, Design & Technology, English, History, Geography, Mathematics, Accounts, Law, Business Studies, French and German, and Global Perspectives alongside Cambridge Technical qualifications in IT, Digital & Creative Media, and Business a range of Level 2 qualifications, and Autodesk Fusion 360.

Additional subjects include Physical Education and PSHE, while courses such as Chef Skills, LAMDA Speaking in Public, London Institute of Banking and Finance and Extended Project Qualifications are available to students.

Digital technology, including Zoom and Canvas platforms enable campuses to collaborate with other schools for subject delivery which enables students to study subjects that would not normally be economically viable

Xello and the Careers Advantage Programme also adds a unique and high quality vocational element to our curriculum which supports all students in gaining a better understanding of their career pathway and progression routes helping to ensure they are life-ready on graduation from OneSchool Global UK and excited about embarking on future post graduate qualifications.

Extra-Curricular activities are a strength of our school. Our students have the opportunity to collaborate on extra-curricular projects and activities at campus, regional and global level. Recent highlights including our termly Choir Festival, annual Public Speaking Competition and inter campus debating opportunities. Our extra-curricular offer is a key part of our curriculum and an area of continuous growth and development for OSGUK.

OneSchool Global Awards



The aim of the OneSchool Global Awards programme is to motivate students to achieve across a range of personal and academic qualities. It is a citation based reward system which acknowledges exemplary student behaviour in relation to our values and skills.

The main focus for awarding a citation is based on OneSchool Global Values
Integrity, Care & Compassion, Respect, Responsibility, Commitment.

The value is demonstrated through a OneSchool Global Skill
Academic Achievement, Leadership, Involvement in School Activities, Diligence, Management Skills.



Integrity



Care & Compassion



Respect



Responsibility



Commitment



Citations are key rewards within OneSchool Global and contribute to the achievement of Bronze, Silver, Gold and Platinum Awards.

The OSG Award is inextricably linked to the OSG House Cup. House Points and citations celebrate students who go above and beyond in living our OneSchool Global Values and can demonstrate progression in OneSchool Global Skills.



**Hit the ground
running**

Career Advancement Programme



**Bridging the gap between school and work;
OneSchool Global UK offer a unique career
advancement plan to all our students and this is
proven to prepare them for the world of work:**

What is CAP?

The Career Advantage Programme (CAP) provides all students with the opportunity to gain the skills and aptitude to achieve rapid success in their post-school careers.

CAP does this by:

- Providing Career Fundamentals and Business Foundations offered to all students in Year 12 and 13.
- Analysing the capability of each student professionally to ensure the student can effectively complete the courses.
- Sponsorship for students to carry out extra-curricular studies in the last two years of school.

The CAP curriculum

All students in Year 12 complete a Career Fundamentals course which is a global standard for employers. For CAP students, the diploma-type courses provide a theoretical and academic rigour, which underpins the students' academic programme and the career skills based study provides practical, real-world approaches to learning and helps them to develop skills and competencies required for lifelong learning.

Visit the website to find out more

<https://www.oneschoolglobal.com/cap/>

Beyond the classroom

Why is CAP Important?

There is an increasing awareness globally that high school studies alone are not adequately preparing students for the modern workforce. The Career Advantage Programme is aimed at equipping our children with the necessary skills to bring positive benefits to our businesses from day one.

Important for students:

- improving their employment opportunities
- improving the potential of earning a higher income on graduation
- empowering rapid progress along their career path

Important for businesses:

- higher value employees that are useful from day one
- employees with an established work ethic; self-starters, self-finishers, self-motivators
- employees that understand the value of study and training

“The students come from school composed, mature, and with a balanced perspective on life; well equipped to cope in the business world.”

- Business Owner



Policies and Documents



Biggleswade Campus is committed to the safeguarding and protection of its students in line with national guidance. We endeavour to provide a safe and welcoming environment where all children are safe, respected and valued, as well as being underpinned by the following two key principles:

- A child-centred approach; for services to be effective they should be based on a clear understanding of the needs and views of children.
- Everyone employed and who comes into contact with children at Biggleswade Campus has a responsibility in relation to safeguarding.

At Biggleswade Campus we listen to students and maintain a child-centred approach to Safeguarding and Child Protection. We provide a safe environment for students both under and over 18, especially those who are considered vulnerable. All of our Policies are available upon request from our school office or via email: biggleswade@uk.oneschoolglobal.com

Administration of Medicines Policy

Admissions Policy

Anti-Bullying Policy

Attendance Policy

Behaviour Management Policy

Complaints Procedure

Curriculum Policy

EAL Policy

Equal Opportunities Policy

Exclusions Policy

Fire Safety (Prevention) Policy

First Aid Policy

Health & Safety Policy

Learning Support (SEND) Policy

Risk Assessment Policy

RSE Policy

Safeguarding & Child Protection Policy

Safer Recruitment Policy

Supervision of Students Policy

Additionally, the particulars of the arrangements for promoting student health and safety on educational trips and visits are available from the school office on request.

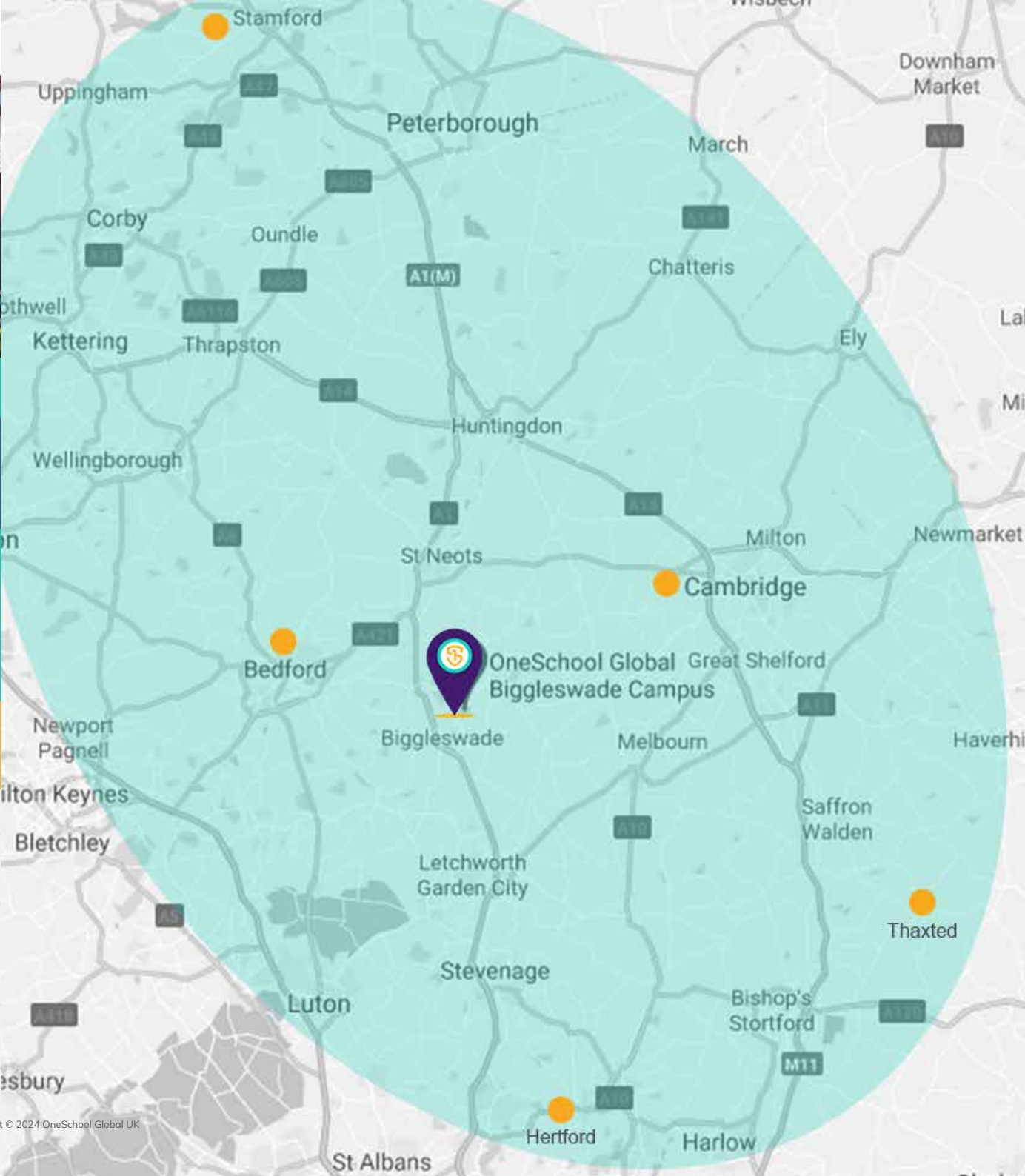
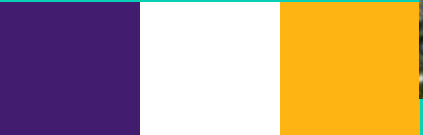
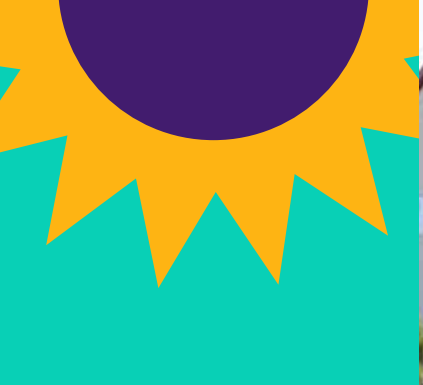
Teachers and Staffing



All OneSchool Global UK Biggleswade Campus teachers hold qualifications applicable to their post. In the absence of qualifications in some practical subjects previous experience will be considered if applicable. All staff, governors and volunteers have been subject to regulatory safer recruitment checks.

Name	Assigned Responsibilities	Qualifications
Hayley Brotherton (maternity Leave)	Campus Administration Officer Exam Officer	-
David Carter	Y5 Teacher	BEd
Ellie Costello	PE Teacher	Cert Fitness
Janice Dando-Cousins	Higher Level Teaching Assistant	Cert P-C Ed, BA Hons
Willow Evans	Y4 Teacher	BEd Hons
Louise Harland	Deputy Campus Principal KS4 Lead, DDSL Science Teacher	BSc Hons, PGCE, PhD, QTS
Joanne Hines	Higher Level Teaching Assistant	BA, L2 Understanding Autism, TEFL/TESOL
Paula Hoppé	Y3 Teacher	BA Adv Cert Ed Mgmt
Deborah Humphreys	Higher Level Teaching Assistant	L3 Nat Dip
Elizabeth Jordan	Geography/ Food Teacher DDSL	BA Hons, QTS
Jasvinder Jutla	Technology Technician	Cert Ed, Mech Eng Tech Cert
Guy Lakin	Premises Manager, HSO	IOSH
Helen Large	English Teacher	PGCE

Name	Assigned Responsibilities	Qualifications
Katherine Law	SENDCo	BSC Hons, PGCE, QTS, NPQH
Mark Little	Campus Principal	BA, PGCert, NPQH
Lucy Parr	Post-16 Lead MFL Teacher	-
Sally Pheysey	Learning Support Assistant	BA
Santania Ricketts-Singh	Assistant Campus Principal Technology Teacher DSL	BA (Ed), MA, Dip Ed.
Amber Shakih	Campus Administration Officer Exam Officer	-
Kath Smart	Campus Administration Officer	-
Nichola Walton	Assistant Campus Principal KS2 Lead	BEd Hons
Catherine Watters	Senior Campus Administration Officer	-
Benjamin Young	PE Teacher Y6 Teacher	BEd Hons, QTS, MLDP



School Information



OneSchool Global UK Biggleswade Campus

The Oaks, Potton Road, Biggleswade, SG18 0EP

- Tel: 01767 602800
- biggleswade@uk.oneschoolglobal.com
- oneschoolglobal.com/biggleswade

Monday to Friday 08:45 - 15:00

Proprietor: **OneSchool Global UK**

OSG UK No: 410
Examination Centre No. 12205
Charity No: 1181301
DfE No: 823/6000

Complaints and Exclusions (2022-2023):

There were no formal complaints during the academic year 2022-2023 and no exclusions.

CA Team

Mr Simon Lewis - Lead CA
Mr Geoffrey Marsh
Mr Nick Pollard
Mr Tim Walton

Campus Board Members

Mr Jarl Stacey
Mr Jeremy Fentiman
Mr Ken Price
Mr Matthew Anderson
Mr Mike Fox

Campus Principal

Mr Mark Little

OSG UK Representatives

Mr Anthony Fryer
Mr Christopher Sweeney

Holiday/Out of Hours Contact

Tel: 01767 602800

Correspondence for the Chair of the Trustees should be addressed to the Principal Office

Mr Anthony Fryer
OneSchool Global Biggleswade Campus
The Precinct Warwick
Poseidon Way
Warwick
CV34 6BY

For further information and the school calendar please visit our website: oneschoolglobal.com/biggleswade
Visit the OneSchool Global UK website: oneschoolglobal.com



There were many ups and downs (such as happens in life), but from supportive peers to excellent teachers I feel that we were moulded into mature thinkers that can take on challenges in view of achieving success!

Ex-Student

We share the enthusiasm of the staff that made these results happen. We share with particular interest the organisation that has the heart of our young people at the centre of its efforts. Your consistency is appreciated. Keep it up, we are all behind you.

Grandparent

As soon as I walked through the doors I knew I needed to work here. There was a buzz of learning in every classroom and the students were well mannered. They described their lessons as epic.

Teacher







OneSchool Global

Learning to learn

OneSchool Global UK Biggleswade Campus

The Oaks
Potton Road
Biggleswade
SG18 0EP
Tel: 01767 602800
Email: biggleswade@uk.oneschoolglobal.com

OneSchool Global UK

The Precinct Warwick
Poseidon Way
Warwick
CV346BY
Tel. 0330 055 5600
Email: support@uk.oneschoolglobal.com