



# Gloucester Campus Prospectus

2023-2024



## Introduction


---

This School is a registered and accredited Independent School established to provide a quality education to the UK community and, in particular, to Brethren students.

The School's Ethos, Values Statement and Guiding Principles govern the School, and are reflected in a series of policies, procedures and handbooks which have been developed to meet statutory and registration requirements and are to be adhered to in all aspects of the operation of the School.

# Contents

---



About OneSchool Global	4
OneSchool Global Ethos	5
OneSchool Global Vision and Mission Statements	6
OneSchool Global Values	7
Welcome	8
History	10
Global House System	11
Our Curriculum	14
OneSchool Awards	15
Career Advancement Programme	16
Policies	18
Teachers and Staffing	19
School Information	21
Testimonials	22

## About OneSchool Global UK

OneSchool Global is a global school, with over 130 campuses in 20 countries, including cities such as New York, Paris, Sydney, Rome, Auckland, Copenhagen, Los Angeles and San Francisco.

With an innovative approach to learning, delivered in cutting-edge, technology-empowered physical and digital learning environments, OneSchool Global is preparing life-ready students who learn how to learn.

Our self-directed learning model places students at the centre of all that we do. We challenge traditional and dated pedagogy and embrace technology to deliver the best possible learning outcomes for our students.

OneSchool Global recruits and develops high quality teachers. Our teachers partner with our students in their learning and rather than being considered the 'sage on the stage', play a 'guide on the side role' to support students.

Our in-house Teacher Academy provides teachers with the training they need to be the best they can be. We provide teachers with the skills they need to be successful at OneSchool Global and skills that will make them highly capable and competent in teaching in a digital world.

OneSchool Global is a school that lives its values and is guided by the School's ethos. The School is generously supported via the donation of time and financial support from members of the Plymouth Brethren Christian Church.



[Click on the OneSchool logo to learn more about how this cutting-edge schooling system was inspired and how this awesome vision is being realised.](#)





## OneSchool Global Ethos

At OneSchool Global, we are committed to a culture where students are encouraged to develop their full potential and acquire the discipline of learning how to learn while upholding Christian teachings and beliefs.

The truth and authority of the Holy Bible and strong family values underpin the commitment of the School to provide quality in every facet of education - curriculum, teachers, facilities, management, and discipline - in a safe and caring environment.

## OneSchool Global Vision Statement



### **A global education ecosystem that develops life-ready students who learn how to learn and achieve.**

To ensure our students are life-ready, we need to teach differently. To be life-ready in today's world, our students need to learn how to learn. To be life ready, our students need to develop independent and critical thinking skills, and skills such as teamwork and collaboration.

It is these skills that form an aptitude base that allows a student to adapt. Most importantly, these critical skills are transferable. When industry changes, when entire fields of work and job types are no longer required, it will be the life-ready, critical thinkers who stand the test of time and find new ways to add value.

We are prepared to do things differently at OneSchool Global to deliver on this vision. We challenge traditional and outdated pedagogical models. Our learning centres, the way we embed technology in them, and ultimately our students, are a testament to this.

## OneSchool Global Mission Statement



### **“Learning to Learn”**

The School is committed to creating and delivering learning programmes that meet the educational needs of each student, and to nurture the attitudes and skills necessary for the continual learning and personal growth throughout life.

“Learning to Learn” means to use learning as a tool whereby students are equipped with the ability to think critically, process information perceptually, analyse data accurately, and evaluate situations intelligently in order that they fulfil their true potential.



## OneSchool Global Values



At OneSchool Global each student, parent and staff member shall uphold the values of the School which include:

**Integrity** – uprightness, honesty and decorous conduct, governed by the Holy Bible,

**Care and Compassion** – kindness, consideration and generosity to all,

**Respect** – for all people, property, opinions and those in authority,

**Responsibility** – for our actions, progress and the environment and,

**Commitment** – to self-discipline and the pursuit of excellence.





Mrs Claire Perrin

## Welcome Message



Welcome to OneSchool Global, Gloucester Campus

At Gloucester Campus we have an excellent cohort of Students, Staff, Parents and Stakeholders. It is a pleasure to be involved in the team as the Lead Campus Administrator. Each consortium shows interest in our core vision of creating 'life ready' persons through our 'learning to learn' framework.

We encourage and seek to uphold the OneSchool values of Integrity, Care and Compassion, Responsibility, Respect and Commitment. With much of our teaching now taught in a Self-Directed approach using the latest technology methods, we continue to strive to provide a 'world class education' to all in another OneSchool mission, of 'what we do for one, we do for all'.

Working as OneSchool Global UK Gloucester Campus we can keep the feel of a local school, but with global collaboration benefiting both students and staff in the latest cutting-edge educational practices.

The work we continue to do with local and national charities provides us with real life opportunities including helping children with life limiting conditions, and supporting families in need, in line with our British Values.

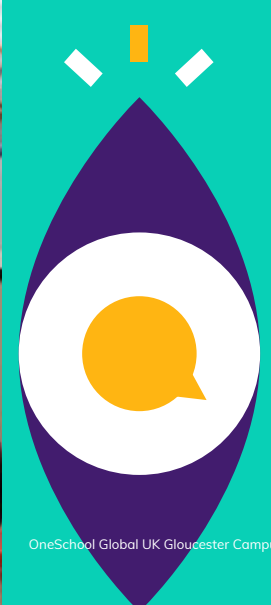
We are very excited to have purchased a new school on the outskirts of Tewkesbury. The site comprises of light, airy and spacious buildings situated in a rural setting with superb outdoor areas. The design and layout will be in line with OSG specification giving our students an excellent learning experience. We aim to move to the new site in September 2024.

We strive to have a happy, positive, and welcoming Campus underpinned by a relentless focus on continuous improvement.

**Mr Ross Markham**  
Lead Campus Administrator (LCA)









## Our History



Gloucester Campus was established in 1995 as Eastbrook College. We have since developed into a forward-looking school, providing a stimulating learning environment and curriculum for students aged 7–18.

The Campus originally catered for students from Gloucester and Swindon. In 2005 they were joined by students from Worcester and Stow. Hereford students arrived in 2006.

The Gloucester Campus journey continued when it became part of the Focus Learning Trust and in 2019 joined other campuses as OneSchool Global to form a truly global education eco system where our pedagogy includes Self-Directed Learning and collaboration locally, nationally and globally.



## The Global House System



**The Global House System is based around the ethos of inclusion and encouraging teamwork.**

It is designed to reward academic work, effort, sporting achievements and good citizenship. It is the role of the House System to embrace all students and provide a climate of success for all.

The Global House System consists of three houses each with an assigned colour as shown below. These houses are run globally throughout our affiliated schools, meaning that we can encourage teamwork with other regions, not just within our campus, thus enhancing our students' desire to strive for their best, due to a much wider area of healthy and constructive competition.

Each student is assigned to a House and will normally remain in that House for his/her duration at the campus. Many house events and competitions are run which link to learning and help foster both teamwork and self-directed learning skills. The Global House System encourages healthy participation in activities and is well supported by staff and student leaders.



## Charitable Fundraising



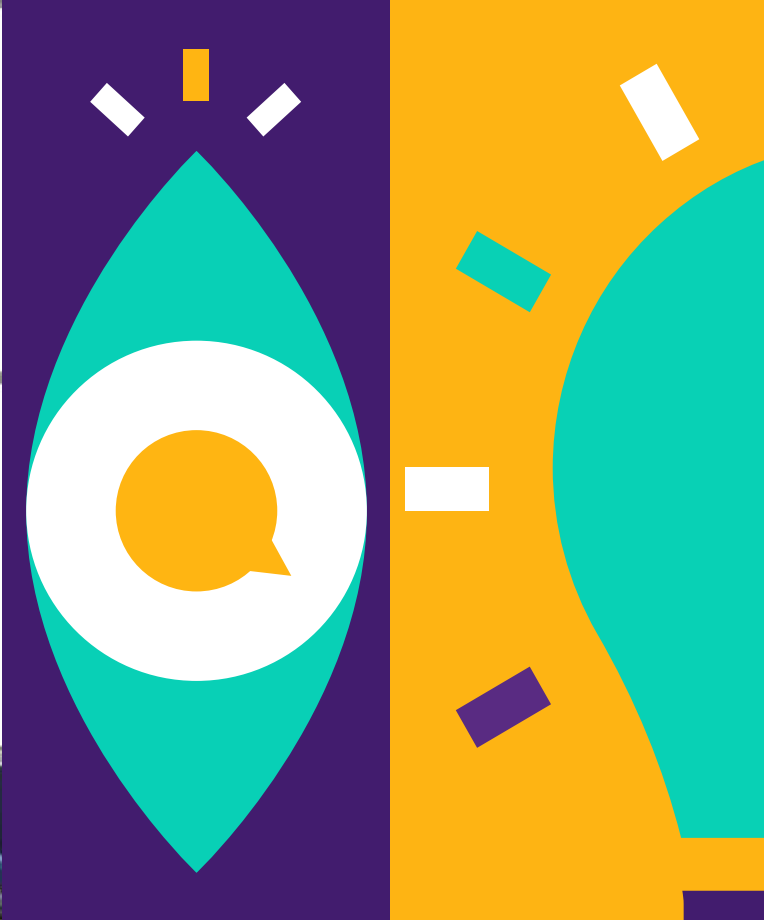
**At Gloucester Campus the whole community is committed to helping those less fortunate than ourselves.**

There is a strong, student-led culture for fundraising and charity at Gloucester Campus. The majority of fundraising initiatives are student-led, with representatives from our student leadership team coming up with ideas for school-wide events. Not only does each initiative raise hundreds of pounds for charity, but it also gives students valuable experience, enabling them to develop leadership skills and promote our OneSchool values.

Charitable donations made in recent years include:

- James Hopkins Trust, Barnwood, Gloucester
- Gloucestershire Bundles
- Midlands Air Ambulance
- NSPCC
- Trussell Trust Centrepoint
- British Red Cross Ukraine Appeal
- Teenage Cancer Trust
- Shelter
- MacMillan Cancer Research
- Rapid Relief Team (RRT)





“

We are thrilled with the progress that has been made in many aspects at Gloucester Campus over the 3 years that our son has been there. Thank you!

”



# Our Curriculum



**...wholly supports the School's ethos in promoting Christian values and provides a balance, ensuring students develop academically, aesthetically, morally and physically.**

Gloucester Campus has adopted the Curriculum Policy developed by OneSchool Global UK. The curriculum is designed to ensure that every student can realise their potential. The curriculum is assignment-based, enabling the self-directed ambition of the organisation to be fulfilled. All students follow a personalised and challenging curriculum.

## Years 3-6

Art  
Design & Technology  
English  
Geography  
History  
IT  
LAMDA  
Mathematics  
MFL  
Music  
PSHE  
Physical Education  
RSE  
Science

## Years 7-8

Art  
Citizenship  
Design & Technology  
English  
Geography  
History  
LAMDA  
Mathematics  
MFL  
PSHE  
Physical Education  
RSE  
Science

## Years 9-11

Art, Craft & Design  
Citizenship  
Design & Technology  
English  
Food & Nutrition  
French  
Geography  
History  
ICT  
LAMDA  
Mathematics  
PSHE  
Physical Education  
RSE  
Science

## Years 12-13

All of our students progress to the sixth form and are offered a broad range of curriculum options designed to meet the abilities and aspirations of all our learners.

Cambridge International A Level qualifications are offered in Art & Design, Design & Technology, English, History, Geography, Mathematics, Accounts, Law, Business Studies, French and German, and Global Perspectives alongside Cambridge Technical qualifications in IT, Digital & Creative Media, and Business, a range of Level 2 qualifications, and Autodesk Fusion 360.

Additional subjects include Physical Education and PSHE, while courses such as Chef Skills, LAMDA Speaking in Public, London Institute of Banking and Finance and Extended Project Qualifications are available to students

Digital technology, including Zoom and Canvas platforms enable campuses to collaborate with other schools for subject delivery which enables students to study subjects that would not normally be economically viable.

Xello and the Careers Advantage Programme also adds a unique and high quality vocational element to our curriculum which supports all students in gaining a better understanding of their career pathway and progression routes helping to ensure they are life-ready on graduation from OneSchool Global UK and excited about embarking on future post graduate qualifications.

Extra-Curricular activities are a strength of our school. Our students have the opportunity to collaborate on extra-curricular projects and activities at campus, regional and global level. Recent highlights including our termly Choir Festival, annual Public Speaking Competition and inter campus debating opportunities. Our extra-curricular offer is a key part of our curriculum and an area of continuous growth and development for OSGUK.

# OneSchool Global Awards



The aim of the OneSchool Global Awards programme is to motivate students to achieve across a range of personal and academic qualities. It is a citation based reward system which acknowledges exemplary student behaviour in relation to our values and skills.

**The main focus for awarding a citation is based on OneSchool Global Values**  
Integrity, Care & Compassion, Respect, Responsibility, Commitment.

**The value is demonstrated through a OneSchool Global Skill**  
Academic Achievement, Leadership, Involvement in School Activities, Diligence, Management Skills.



Integrity



Care & Compassion



Respect



Responsibility



Commitment



Citations are key rewards within OneSchool Global and contribute to the achievement of Bronze, Silver, Gold and Platinum Awards.

The OSG Award is inextricably linked to the OSG House Cup. House Points and citations celebrate students who go above and beyond in living our OneSchool Global Values and can demonstrate progression in OneSchool Global Skills.





## Career Advancement Programme



**Bridging the gap between school and work; OneSchool Global UK offer a unique career advancement plan to all our students and this is proven to prepare them for the world of work:**

### What is CAP?

The Career Advantage Programme (CAP) provides all students with the opportunity to gain the skills and aptitude to achieve rapid success in their post-school careers.

CAP does this by:

- Providing Career Fundamentals and Business Foundations offered to all students in Year 12 and 13.
- Analysing the capability of each student professionally to ensure the student can effectively complete the courses.
- Sponsorship for students to carry out extra-curricular studies in the last two years of school.

### The CAP curriculum

All students in Year 12 complete a Career Fundamentals Course which is a global standard for employers. For CAP students, the diploma-type courses provide a theoretical and academic rigour, which underpins the students' academic programme and the career skills based study provides practical, real-world approaches to learning and helps them to develop skills and competencies required for lifelong learning.

Visit the website to find out more

<https://www.oneschoolglobal.com/cap/>

**Hit the ground  
running**

# Beyond the classroom



## Why is CAP Important?

There is an increasing awareness globally that high school studies alone are not adequately preparing students for the modern workforce. The Career Advantage Programme is aimed at equipping our children with the necessary skills to bring positive benefits to our businesses from day one.

### Important for students:

- improving their employment opportunities
- improving the potential of earning a higher income on graduation
- empowering rapid progress along their career path

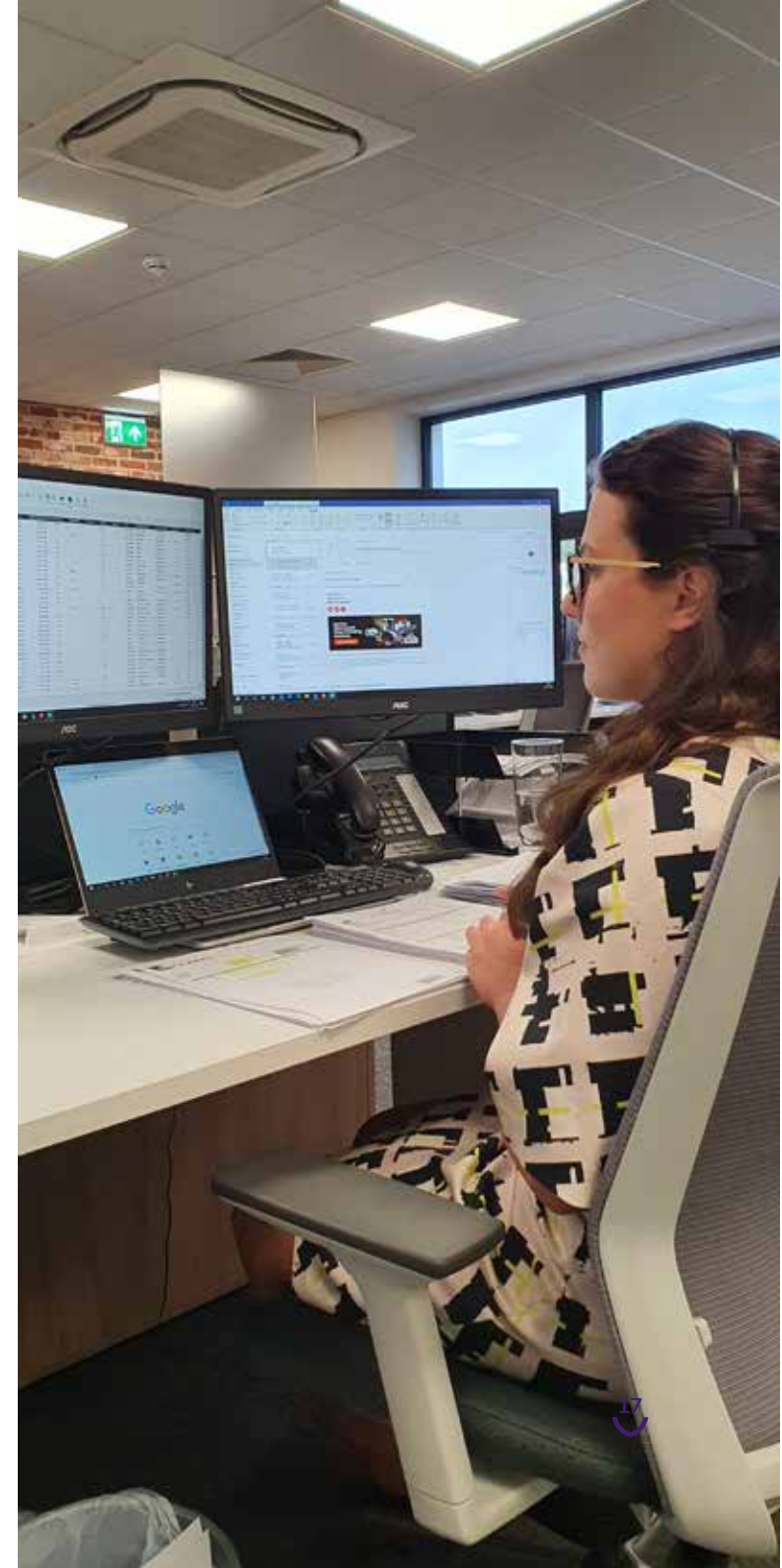
### Important for businesses:

- higher value employees that are useful from day one
- employees with an established work ethic; self-starters, self-finishers, self-motivators
- employees that understand the value of study and training

“A true testament of the innovative teaching program incorporating SDL & CAP resulting in mature, career ready, life-ready school leavers. Thank you OneSchool Global!”



- Business Owner



# Policies and Documents



Gloucester Campus is committed to the safeguarding and protection of its students in line with national guidance. We endeavour to provide a safe and welcoming environment where all children are safe, respected and valued, as well as being underpinned by the following two key principles:

- A child-centred approach; for services to be effective they should be based on a clear understanding of the needs and views of children.
- Everyone employed and who comes into contact with children at Gloucester Campus has a responsibility in relation to safeguarding.

At Gloucester Campus we listen to students and maintain a child-centred approach to Safeguarding and Child Protection. We provide a safe environment for students both under and over 18, especially those who are considered vulnerable. All of our Policies are available upon request from our school office or via email: [gloucester@uk.oneschoolglobal.com](mailto:gloucester@uk.oneschoolglobal.com)

---

Administration of Medicines Policy

---

Admissions Policy

---

Anti-Bullying Policy

---

Attendance Policy

---

Behaviour Management Policy

---

Complaints Procedure

---

Curriculum Policy

---

EAL Policy

---

Equal Opportunities Policy

---

Exclusions Policy

---

Fire Safety (Prevention) Policy

---

First Aid Policy

---

Health & Safety Policy

---

Learning Support (SEND) Policy

---

Risk Assessment Policy

---

RSE Policy

---

Safeguarding & Child Protection Policy

---

Safer Recruitment Policy

---

Supervision of Students Policy

Additionally, the particulars of the arrangements for promoting student health and safety on educational trips and visits are available from the school office on request.

# Teachers and Staffing

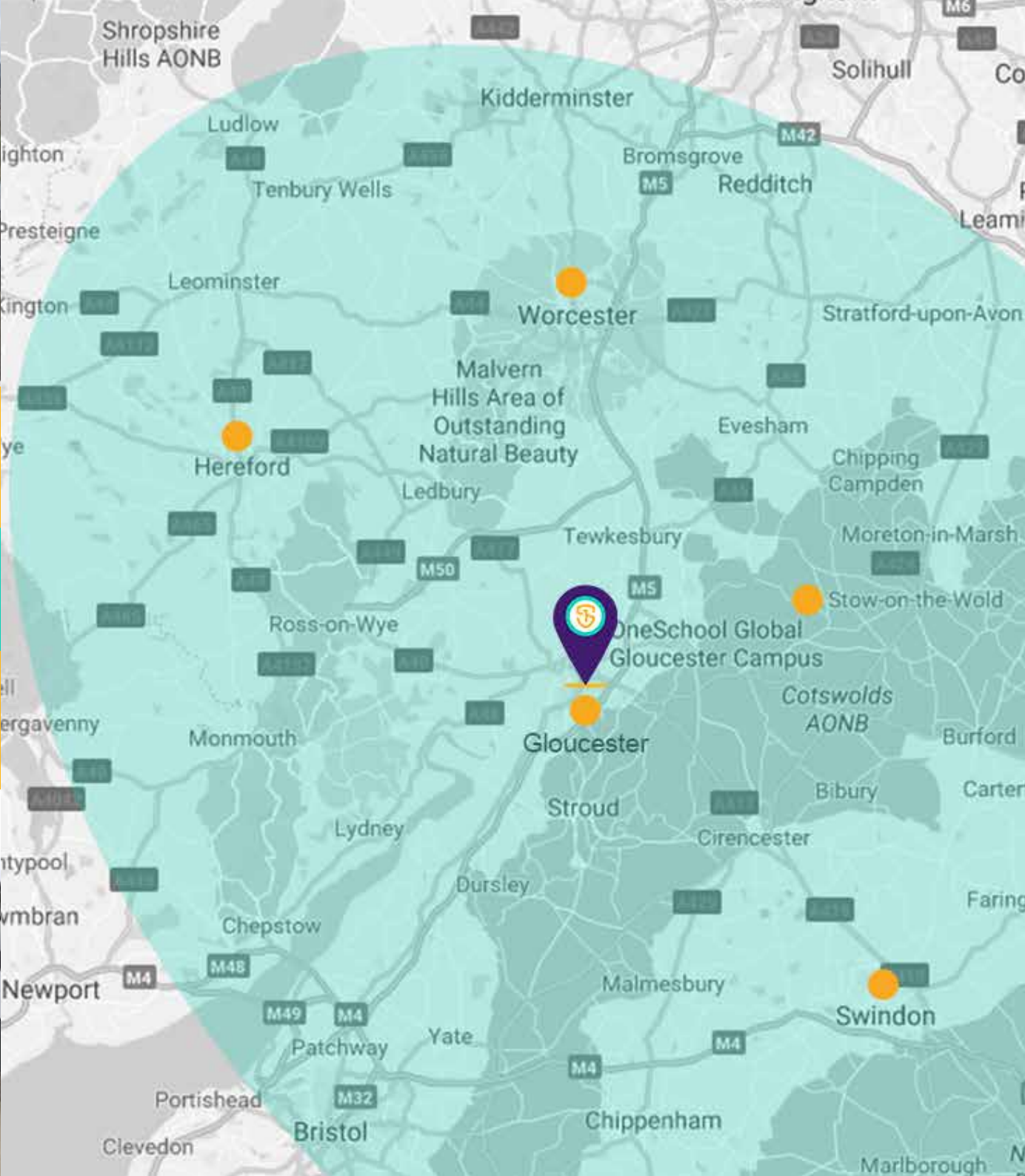
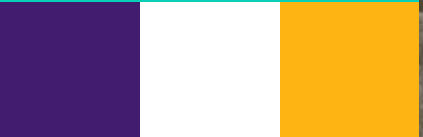
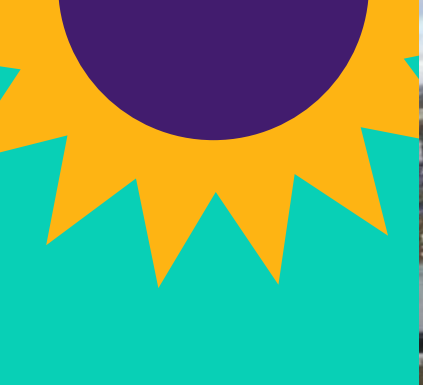


At OneSchool Global UK Gloucester Campus teachers hold qualifications applicable to their post. In the absence of qualifications in some practical subjects previous experience will be considered if applicable. All staff, governors, trustees and volunteers have been subject to regulatory safer recruitment checks.

Name	Assigned Responsibilities	Qualifications
Mrs H Brady	PE Lead & Assistant LSCO	PGCE in Specific Learning Difficulties
Miss B Clarke	Primary Teacher	QTS, PGCE
Mrs C Cratchley	Primary HLTA & Cover teacher	Higher Level Teaching Assistant
Mrs V Donaldson	Learning Centre Coach	Teaching and Learning NVQ in Special Need, HLTA
Mr D Doughty	Geography / Citizenship Teacher Global Perspectives Teacher	BA, PGCE
Miss L Dunbar	Primary Teacher MACo, DDSL	BA, PGCE
Mr M Goddard	Premises Manager	-
Mr L Graham	Art & Design Technician	BA Fine Art
Mrs S Green	Exams & Senior Campus Administration Officer	PGCE, BA, QTS, NCFE Level 2 certificate in Principles of Business Administration
Mrs K Greig	Exams Invigilator	-
Mrs C Hargraves	Administration Officer	-
Mrs W Harris	Exams Invigilator	-

Name	Assigned Responsibilities	Qualifications
Mrs G Jenner	Science Technician	-
Mrs C Meek	Learning Support Assistant First Aider	NQF Level 3
Miss N Palmer	Primary Teacher	PGCE
Mrs C Perrin	Acting Campus Principall Designated Mental Health Lead (DMHL) LSCO, PE Teacher, DSL	BA, QTS, Level 3 SEN
Mrs E Simpson	Design Technology (DT) Teacher	PGCE, PhD, B.Eng
Mrs D Smee	Food & Nutrition Teacher	BEd
Mr B Smith	Science & PE Teacher Sports Leader, KS4 Lead	BA Master of Education, PGCE
Miss D Southcott	KS2 Lead	BA, PGCE
Mr J Spicer	Premises Manager	-
Miss C Thorniley	KS2 Teacher	B.Ed
Mrs J Townsend	HLTA	B.A. (Hons.) Special and Inclusive Education, Foundation Degree, Learning Support
Miss L Wickison	Administration Officer	-





# School Information



## OneSchool Global UK Gloucester Campus

7 Eastbrook Road, Gloucester GL4 3DB

- Tel: 01452 417722
- [gloucester@uk.oneschoolglobal.com](mailto:gloucester@uk.oneschoolglobal.com)
- [oneschoolglobal.com/gloucester](https://oneschoolglobal.com/gloucester)

Monday to Friday 08:45 - 15:00

Proprietor: **OneSchool Global UK**

OSG UK No: 606  
Examination Centre No. 57140  
Charity No: 1181391  
DfE No: 916/6078

### Complaints and Exclusions (2022-2023):

There were no complaints or exclusions during this academic year 2022-2023.

For further information please visit our website: [oneschoolglobal.com/gloucester](https://oneschoolglobal.com/gloucester)  
Visit the OneSchool Global website: [oneschoolglobal.com](https://oneschoolglobal.com)

### CA Team

Mr Ross Markham (Lead CA)  
Mr Peter Ball

### Campus Board

Mr Anthony Bushnell  
Mr Lloyd Coldrick  
Mr Andy Trigwell  
Mr Gavin Tomkins  
Mr Daryl Bedford

---

### Acting Campus Principal

Mrs Claire Perrin

---

### OneSchool Global UK Representatives

Mr Ben Woodcock  
Mrs Sarah Bennett

---

### Holiday/Out of Hours Contact

Mr Ross Markham Tel: 07848 459228  
email: [ross.markham@uk.oneschoolglobal.com](mailto:ross.markham@uk.oneschoolglobal.com)

---

### Correspondence for the Chair of the Trustees should be addressed to the Principal Office

Mr Ben Woodcock  
OneSchool Global UK Gloucester Campus  
The Precinct Warwick  
Poseidon Way  
Warwick  
CV34 6BY



Please pass on our thanks for all the hard work....how lucky we are to have such an amazing set of teachers for our children!!

Parent

Brilliant experience!! Really appreciated the insights into what happens on a daily basis at school. Awe-inspiring to see the self-directed learning in action.

Stakeholder Event

Thank you for your kind and generous donations. We really do appreciate your ongoing support and for very kindly thinking of us once again. Your donations will make a huge difference to us.

Charity Representative

Wow, what a great school and environment to learn and develop in. The great teachers with the best in mind for the children with great new teaching methods. Can we come back to school!!! Many thanks.

Stakeholder Event









# OneSchool Global

*Learning to learn*

## **OneSchool Global UK Gloucester Campus**

7 Eastbrook Road,  
Gloucester  
GL4 3DB  
Tel: 01452 417722  
Email: [gloucester@uk.oneschoolglobal.com](mailto:gloucester@uk.oneschoolglobal.com)

## **OneSchool Global UK**

The Precinct Warwick  
Poseidon Way  
Warwick  
CV34 6BY  
Tel. 0330 055 5600  
Email: [support@uk.oneschoolglobal.com](mailto:support@uk.oneschoolglobal.com)