



# **Kenley Campus** **Prospectus**

2023-2024



## Introduction

---



This School is a registered and accredited Independent School established to provide a quality education to the UK community and, in particular, to Brethren students.

The School's Ethos, Values Statement and Guiding Principles govern the School, and are reflected in a series of policies, procedures and handbooks which have been developed to meet statutory and registration requirements and are to be adhered to in all aspects of the operation of the School.

# Contents



---

About OneSchool Global	4
OneSchool Global Ethos	5
OneSchool Global Vision and Mission Statements	6
OneSchool Global Values	7
Welcome	8
History	10
Global House System	11
Our Curriculum	14
OneSchool Awards	15
Career Advancement Programme	16
Policies	18
Teachers and Staffing	19
School Information	20
Testimonials	22

## OneSchool Global UK

OneSchool Global is a global school, with over 130 campuses in 20 countries, including cities such as New York, Paris, Sydney, Rome, Auckland, Copenhagen, Los Angeles and San Francisco.

With an innovative approach to learning, delivered in cutting-edge, technology-empowered physical and digital learning environments, OneSchool Global is preparing life-ready students who learn how to learn.

Our self-directed learning model places students at the centre of all that we do. We challenge traditional and dated pedagogy and embrace technology to deliver the best possible learning outcomes for our students.

OneSchool Global recruits and develops high quality teachers. Our teachers partner with our students in their learning and rather than being considered the 'sage on the stage', play a 'guide on the side role' to support students.

Our in-house Teacher Academy provides teachers with the training they need to be the best they can be. We provide teachers with the skills they need to be successful at OneSchool Global and skills that will make them highly capable and competent in teaching in a digital world.

OneSchool Global is a school that lives its values and is guided by the School's ethos. The School is generously supported via the donation of time and financial support from members of the Plymouth Brethren Christian Church.



[Click on the OneSchool logo to learn more about how this cutting-edge schooling system was inspired and how this awesome vision is being realised.](#)





## OneSchool Global Ethos

At OneSchool Global, we are committed to a culture where students are encouraged to develop their full potential and acquire the discipline of learning how to learn while upholding Christian teachings and beliefs.

The truth and authority of the Holy Bible and strong family values underpin the commitment of the School to provide quality in every facet of education - curriculum, teachers, facilities, management, and discipline - in a safe and caring environment.

## OneSchool Global Vision Statement



### **A global education ecosystem that develops life-ready students who learn how to learn and achieve.**

To ensure our students are life-ready, we need to teach differently. To be life-ready in today's world, our students need to learn how to learn. To be life ready, our students need to develop independent and critical thinking skills, and skills such as teamwork and collaboration

It is these skills that form an aptitude base that allows a student to adapt. Most importantly, these critical skills are transferable. When industry changes, when entire fields of work and job types are no longer required, it will be the life-ready, critical thinkers who stand the test of time and find new ways to add value.

We are prepared to do things differently at OneSchool Global to deliver on this vision. We challenge traditional and outdated pedagogical models. Our learning centres, the way we embed technology in them, and ultimately our students, are a testament to this.

## OneSchool Global Mission Statement



### **“Learning to Learn”**

The School is committed to creating and delivering learning programmes that meet the educational needs of each student, and to nurture the attitudes and skills necessary for the continual learning and personal growth throughout life.

“Learning to Learn” means to use learning as a tool whereby students are equipped with the ability to think critically, process information perceptually, analyse data accurately, and evaluate situations intelligently in order that they fulfil their true potential.

## OneSchool Global Values



At OneSchool Global each student, parent and staff member shall uphold the values of the School which include:

**Integrity** – uprightness, honesty and decorous conduct, governed by the Holy Bible,

**Care and Compassion** – kindness, consideration and generosity to all,

**Respect** – for all people, property, opinions and those in authority,

**Responsibility** – for our actions, progress and the environment and,

**Commitment** – to self-discipline and the pursuit of excellence.



## Welcome Message



Welcome to OneSchool Global UK Kenley Campus

Since inception, the school has pursued a programme of continual development and improvement, resulting in a well-proven centre of educational achievement. It has a strong Christian ethos. As a registered school and exam centre, it gives students the opportunity to fulfil their potential with a high standard of learning being reflected in nationally accredited exam results. Special educational needs are specifically provided for by specialist staff using accepted therapies.

Teaching is provided by well-qualified professional staff. School management is looked after by the Campus Administrator (CA) Team and the Campus Principal overseen by the OneSchool Global Board of Directors, who have specific areas of responsibility. The school expects a high level of commitment by students and considers the full support of parents to be an essential ingredient to success.

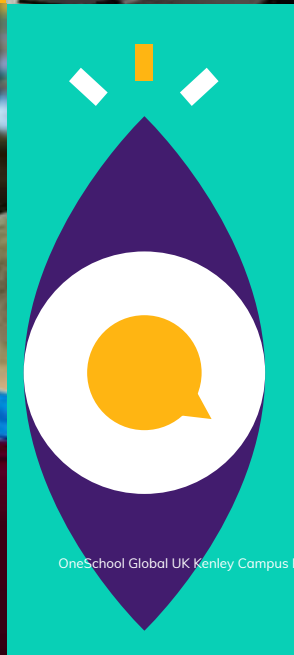
The CA Team regard good communication links with the students, parents and all staff to be very important and will be pleased to respond to any enquiries.

### **Mr Giles Harwood**

Lead Campus Administrator









## Our history



The 'Kenley and Wexham Elementary Schools' were purpose built in 1875 as a separate boys and girls school. The school site was acquired in 2005 by Focus Learning Trust. A huge renovation project began to sympathetically restore the original Grade II listed building to a state of the art learning centre. The current school has an excellent learning environment, enhanced by blending a modern interior with the latest up to date technology.

98% of students agree or strongly agree that they have regular access to IT at school to support their learning.

## The Global House System



The Global House System is based around the ethos of inclusion and encouraging teamwork.

It is designed to reward academic work, effort, sporting achievements and good citizenship. It is the role of the House System to embrace all students and provide a climate of success for all.

The Global House System consists of three houses each with an assigned colour as shown below. These houses are run globally throughout our affiliated schools, meaning that we can encourage teamwork with other regions, not just within our campus, thus enhancing our students' desire to strive for their best, due to a much wider area of healthy and constructive competition.

Each student is assigned to a House and will normally remain in that House for his/her duration at the campus. Many house events and competitions are run which link to learning and help foster both teamwork and self-directed learning skills. The Global House System encourages healthy participation in activities and is well supported by staff and student leaders.



## Charitable Fundraising



At Kenley Campus the whole community is committed to helping those less fortunate than ourselves.

There is a strong, student-led culture for fundraising and charity at Kenley. This academic year students have raised money for many charities. The majority of fundraising initiatives are student-led, with representatives from our student council coming up with ideas for school-wide events. Not only does each initiative raise hundreds of pounds for charity, but it also gives students valuable experience in organising and leadership skills.

Charitable donations made recently include:

- Royal Marsden Hospital
- Great Ormond Street Hospital



Integrity



Care & Compassion



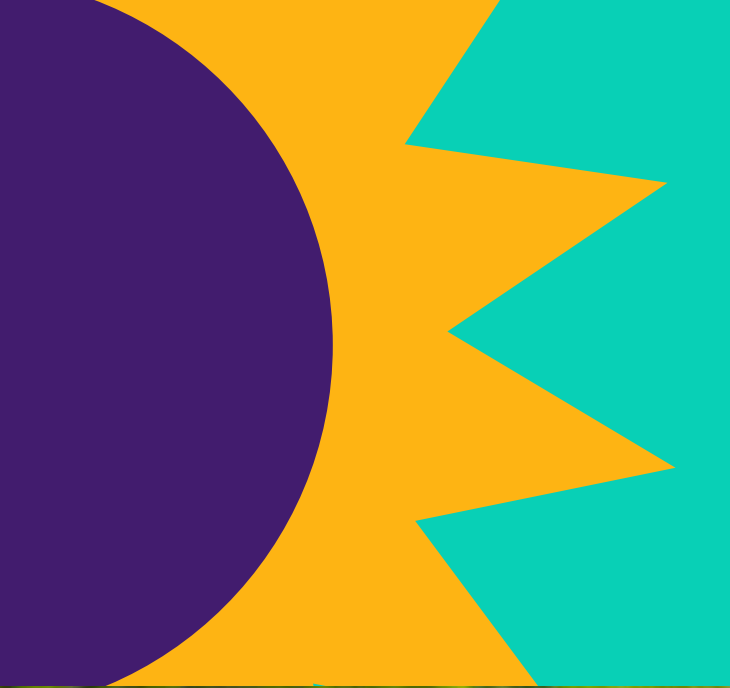
Respect

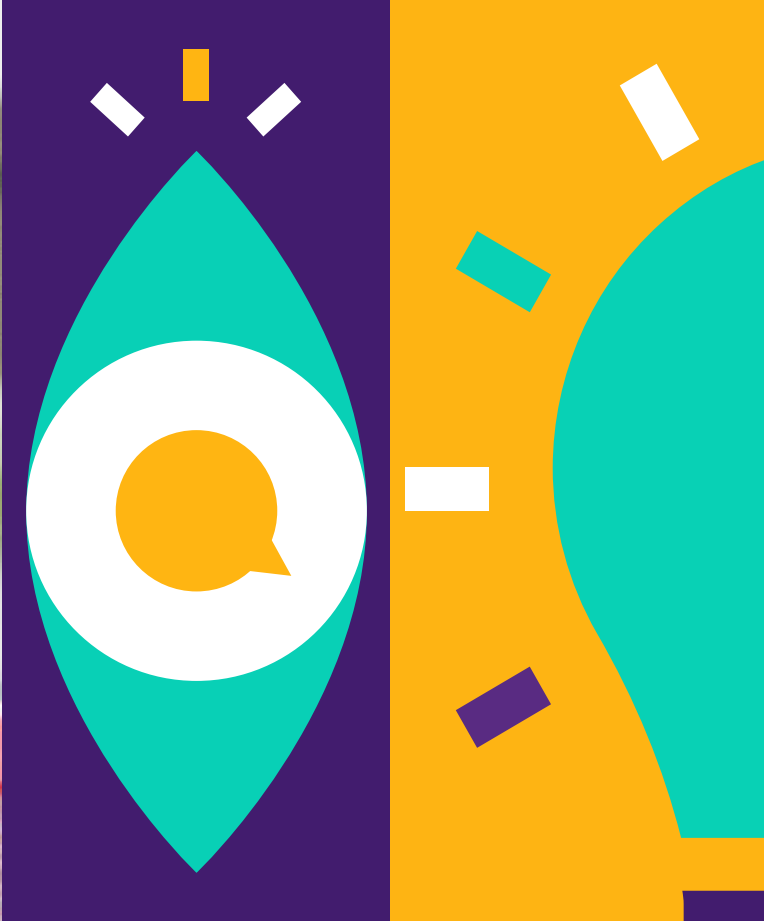


Responsibility



Commitment





“  
Many thanks for all you have done  
to get the best out of the children.  
”

# Our Curriculum



**...wholly supports the School's ethos in promoting Christian values and provides a balance, ensuring students develop academically, aesthetically, morally and physically.**

Kenley Campus has adopted the Curriculum Policy developed by OneSchool Global UK. The curriculum is designed to ensure that every student can realise their potential. The curriculum is assignment-based, enabling the self-directed ambition of the organisation to be fulfilled. All students follow a personalised and challenging curriculum.

## Years 3-6

Art  
Design & Technology  
English  
Geography  
History  
IT  
LAMDA  
Mathematics  
MFL  
Music  
PSHE  
Physical Education  
Science

## Years 7-8

Art  
Citizenship  
Design & Technology  
English  
Geography  
History  
IT  
LAMDA  
Mathematics  
MFL  
PSHE  
Physical Education  
Science

## Years 9-11

Art, Craft & Design  
Citizenship  
Design & Technology  
English  
Food & Nutrition  
French  
Geography  
German  
History  
ICT  
LAMDA  
Mathematics  
PSHE  
Physical Education  
RSE  
Science  
Spanish

## Years 12-13

All of our students progress to the sixth form and are offered a broad range of curriculum options designed to meet the abilities and aspirations of all our learners.

Cambridge International A Level qualifications are offered in Art & Design, Design & Technology, English, History, Geography, Mathematics, Accounts, Law, Business Studies, French and German, and Global Perspectives alongside Cambridge Technical qualifications in IT, Digital & Creative Media, and Business, a range of Level 2 qualifications, and Autodesk Fusion 360.

Additional subjects include Physical Education and PSHE, while courses such as Chef Skills, LAMDA Speaking in Public, London Institute of Banking and Finance and Extended Project Qualifications are available to students.

Digital technology, including Zoom and Canvas platforms enable campuses to collaborate with other schools for subject delivery which enables students to study subjects that would not normally be economically viable

Xello and the Careers Advantage Programme also adds a unique and high quality vocational element to our curriculum which supports all students in gaining a better understanding of their career pathway and progression routes helping to ensure they are life-ready on graduation from OneSchool Global UK and excited about embarking on future post graduate qualifications.

Extra-Curricular activities are a strength of our school. Our students have the opportunity to collaborate on extra-curricular projects and activities at campus, regional and global level. Recent highlights including our termly Choir Festival, annual Public Speaking Competition and inter campus debating opportunities. Our extra-curricular offer is a key part of our curriculum and an area of continuous growth and development for OSGUK.

# OneSchool Global Awards



The aim of the OneSchool Global Awards programme is to motivate students to achieve across a range of personal and academic qualities. It is a citation based reward system which acknowledges exemplary student behaviour in relation to our values and skills.

**The main focus for awarding a citation is based on OneSchool Global Values**  
Integrity, Care & Compassion, Respect, Responsibility, Commitment.

**The value is demonstrated through a OneSchool Global Skill**  
Academic Achievement, Leadership, Involvement in School Activities, Diligence, Management Skills.



Integrity



Care & Compassion



Respect



Responsibility



Commitment



Citations are key rewards within OneSchool Global and contribute to the achievement of Bronze, Silver, Gold and Platinum Awards.

The OSG Award is inextricably linked to the OSG House Cup. House Points and citations celebrate students who go above and beyond in living our OneSchool Global Values and can demonstrate progression in OneSchool Global Skills.



**Hit the ground  
running**

## Career Advancement



**Bridging the gap between school and work; OneSchool Global UK offer a unique career advancement plan to all our students and this is proven to prepare them for the world of work:**

### What is CAP?

The Career Advantage Programme (CAP) provides all students with the opportunity to gain the skills and aptitude to achieve rapid success in their post-school careers.

CAP does this by:

- Providing Career Fundamentals and Business Foundations offered to all students in Year 12 and 13.
- Analysing the capability of each student professionally to ensure the student can effectively complete the courses.
- Sponsorship for students to carry out extra-curricular studies in the last two years of school.

### The CAP curriculum

All students in Year 12 complete a Career Fundamentals course which is a global standard for employers. For CAP students, the diploma-type courses provide a theoretical and academic rigour which underpins the students' academic programme and the career skills based study provides practical, real-world approaches to learning and helps them to develop skills and competencies required for lifelong learning.

Visit the website to find out more

<https://www.oneschoolglobal.com/cap/>



## Beyond the classroom



### Why is CAP Important?

There is an increasing awareness globally that high school studies alone are not adequately preparing students for the modern workforce. The Career Advantage Programme is aimed at equipping our children with the necessary skills to bring positive benefits to our businesses from day one.

### Important for students:

- improving their employment opportunities
- improving the potential of earning a higher income on graduation
- empowering rapid progress along their career path

### Important for businesses:

- higher value employees that are useful from day one
- employees with an established work ethic; self-starters, self-finishers, self-motivators
- employees that understand the value of study and training

**“The innovative approach to the curriculum, teaching and learning is what makes this school outstanding because it enables all pupils to make excellent progress and achieve their very best”**



- Business Owner



# Policies and Documents



Kenley Campus is committed to the safeguarding and protection of its students in line with national guidance. We endeavour to provide a safe and welcoming environment where all children are safe, respected and valued, as well as being underpinned by the following two key principles:

- A child-centred approach; for services to be effective they should be based on a clear understanding of the needs and views of children.
- Everyone employed and who comes into contact with children at Kenley Campus has a responsibility in relation to safeguarding.

At Kenley Campus we listen to students and maintain a child-centred approach to Safeguarding and Child Protection. We provide a safe environment for students both under and over 18, especially those who are considered vulnerable. All of our Policies are available upon request from our school office or via email [kenley@uk.oneschoolglobal.com](mailto:kenley@uk.oneschoolglobal.com)

---

Administration of Medicines Policy

---

Admissions Policy

---

Anti-Bullying Policy

---

Attendance Policy

---

Behaviour Management Policy

---

Complaints Procedure

---

Curriculum Policy

---

EAL Policy

---

Equal Opportunities Policy

---

Exclusions Policy

---

Fire Safety (Prevention) Policy

---

First Aid Policy

---

Health & Safety Policy

---

Learning Support (SEND) Policy

---

Risk Assessment Policy

---

RSE Policy

---

Safeguarding & Child Protection Policy

---

Safer Recruitment Policy

---

Supervision of Students Policy

Additionally, the particulars of the arrangements for promoting student health and safety on educational trips and visits are available from the school office on request.

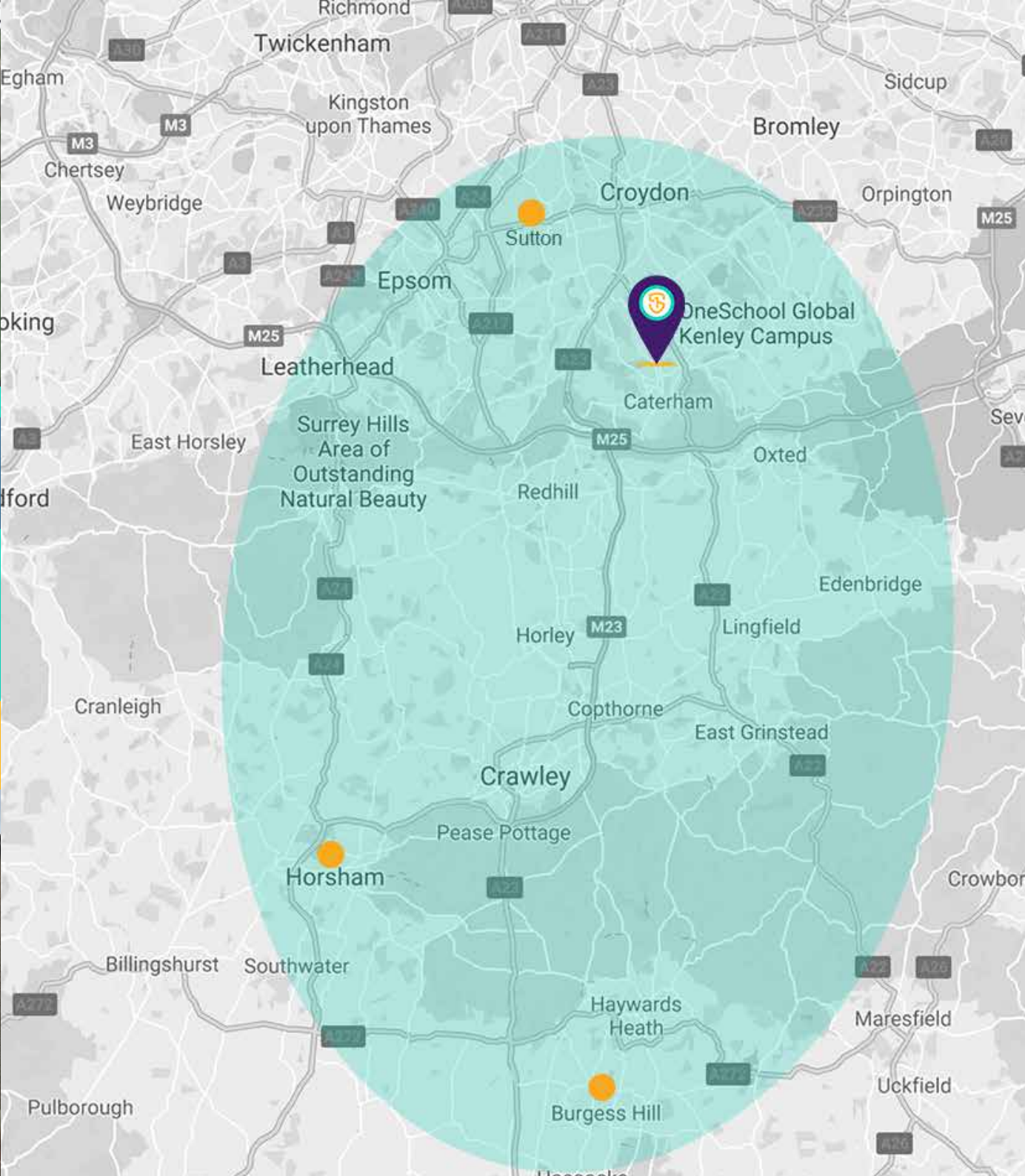
# Teachers and Staffing



All OneSchool Global UK Kenley Campus teachers hold qualifications applicable to their post. In the absence of qualifications in some practical subjects previous experience will be considered if applicable. All staff, governors and volunteers have been subject to regulatory safer recruitment checks.

Name	Assigned Responsibilities	Qualifications
Mr N C Ainley	Assistant Campus Principal, KS2 and KS3 Lead, Primary Teacher	BSc
Mrs S Ainley	Teaching Assistant	-
Mrs S Boorman	Teaching Assistant	-
Mr David Brook	Acting Campus Principal	-
Mr W Cheng	Boys' PE Teacher, DDSL	BSc
Mrs C Fernando	Assistant Campus Principal Deputy Designated Safeguarding Lead Learning Support Coordinator Regional Head of Department Primary Science, Primary Teacher	QTS BA(Ed), MA, PGCE, NASENCO
Mrs N Gadd	Teaching Assistant	NVQ Level 3
Mrs J Ironmonger	MFL Teacher	BA (Hons), PGCE
Mrs K Levett	Assistant Campus Principal Art and DT Teacher Designated Safeguarding Lead	BA (Hons), PGCE, MA

Name	Assigned Responsibilities	Qualifications
Mr H Livett	History Teacher	BA, PGCE
Mrs J Murray	Food and Nutrition Teacher	BSc
Mr P Norris	Premises Manager	-
Mr S Ojok	Teaching Assistant	BA (Hons)
Mrs M Persen	Primary Teacher	BA, QTS
Miss A Poorman	HLTA	-
Mrs L Scanlon	Exams Officer	-
Mrs A Skinner	Senior Campus Administration Officer	-
Miss R Smith	Primary Teacher	TEFL, BA (hons), MA, PGCE
Mrs A Tune	Geography Teacher	BA (Hons), PGCE
Mrs V Windmill	Teaching Assistant	BA(Hons) and Dip.Couns



# School Information



## OneSchool Global UK Kenley Campus

Victor Beamish Avenue, Kenley, Surrey CR3 5FX

- Tel: 01883 338 634
- [kenley@uk.oneschoolglobal.com](mailto:kenley@uk.oneschoolglobal.com)
- [oneschoolglobal.com/kenley](https://oneschoolglobal.com/kenley)

Monday to Friday 09:00 AM - 15:00 PM

Proprietor: **OneSchool Global UK**

OSG UK No: 502  
Examination Centre No. 14351  
Charity No: 1181301  
DfE No: 936/6073

### Complaints and Exclusions (2022-2023):

There were 2 complaints and no exclusions during this academic year 2022-2023.

For further information and the school calendar please visit our website: [oneschoolglobal.com/kenley](https://oneschoolglobal.com/kenley)  
Visit the OneSchool Global UK website: [oneschoolglobal.com](https://oneschoolglobal.com)

<b>CA Team</b>	Mr Giles Harwood - Lead CA Mr Glen McMullan Mr Gaius Owen
<b>Campus Board Members</b>	Mr Daryl Stanley Mr Joseph Harwood Mr Lloyd King Mr Luke Reiner Mr Simon Gould
<b>Acting Campus Principal</b>	Mr David Brook
<b>OneSchool Global UK Representatives</b>	Mr Ben Woodcock Mr Christopher Sweeney
<b>Holiday/Out of Hours Contact</b>	Tel: 07848 454451
<b>Correspondence for the Chair of the Trustees should be addressed to the Principal Office</b>	Mr Ben Woodcock OneSchool Global UK Kenley Campus The Precinct Warwick Poseidon Way Warwick CV34 6BY



'The Learning Centre is a great environment to learn in as it makes self-directed learning more accessible. I enjoy school because the atmosphere around the school is very positive and everyone is raring to learn.'

Year 10 student

'At our school there is a great sense of positivity and motivation to do the right thing. Everyone is focused towards their work and the concept of SDL and the Learning Centre has been an amazing provision in assisting this'.

Year 12 student

'The school is the best it has ever been due to our diverse range of staff that are always there to guide and support us'.

Year 12 student





When Sneezing

Keep 1m Apart



# OneSchool Global

*Learning to learn*

## OneSchool Global UK Kenley Campus

Victor Beamish Avenue,  
Kenley,  
Surrey,  
CR3 5FX  
Tel: 01883 338634  
Email: [kenley@uk.oneschoolglobal.com](mailto:kenley@uk.oneschoolglobal.com)

## OneSchool Global UK

The Precinct Warwick  
Poseidon Way  
Warwick  
CV346BY  
Tel. 0330 055 5600  
Email: [support@uk.oneschoolglobal.com](mailto:support@uk.oneschoolglobal.com)