



Knockloughrim Campus Prospectus

2023-2024




Introduction

This School is a registered and accredited Independent School established to provide a quality education to the UK community and, in particular, to Brethren students.

The School's Ethos, Values Statement and Guiding Principles govern the School, and are reflected in a series of policies, procedures and handbooks which have been developed to meet statutory and registration requirements and are to be adhered to in all aspects of the operation of the School.

Contents



About OneSchool Global	4
OneSchool Global Ethos	5
OneSchool Global Vision and Mission Statements	6
OneSchool Global Values	7
Welcome	8
History	10
Global House System	11
Our Curriculum	14
OneSchool Awards	15
Career Advancement Programme	16
Policies	18
Teachers and Staffing	19
School Information	20
Testimonials	22

About OneSchool Global UK

OneSchool Global is a global school, with over 130 campuses in 20 countries, including cities such as New York, Paris, Sydney, Rome, Auckland, Copenhagen, Los Angeles and San Francisco.

With an innovative approach to learning, delivered in cutting-edge, technology-empowered physical and digital learning environments, OneSchool Global is preparing life-ready students who learn how to learn.

Our self-directed learning model places students at the centre of all that we do. We challenge traditional and dated pedagogy and embrace technology to deliver the best possible learning outcomes for our students.

OneSchool Global recruits and develops high quality teachers. Our teachers partner with our students in their learning and rather than being considered the 'sage on the stage', play a 'guide on the side role' to support students.

Our in-house Teacher Academy provides teachers with the training they need to be the best they can be. We provide teachers with the skills they need to be successful at OneSchool Global and skills that will make them highly capable and competent in teaching in a digital world.

OneSchool Global is a school that lives its values and is guided by the School's ethos. The School is generously supported via the donation of time and financial support from members of the Plymouth Brethren Christian Church.



[Click on the OneSchool logo to learn more about how this cutting-edge schooling system was inspired and how this awesome vision is being realised.](#)





OneSchool Global Ethos

At OneSchool Global, we are committed to a culture where students are encouraged to develop their full potential and acquire the discipline of learning how to learn while upholding Christian teachings and beliefs.

The truth and authority of the Holy Bible and strong family values underpin the commitment of the School to provide quality in every facet of education - curriculum, teachers, facilities, management, and discipline - in a safe and caring environment.

OneSchool Global Vision Statement



A global education ecosystem that develops life-ready students who learn how to learn and achieve.

To ensure our students are life-ready, we need to teach differently. To be life-ready in today's world, our students need to learn how to learn. To be life ready, our students need to develop independent and critical thinking skills, and skills such as teamwork and collaboration

It is these skills that form an aptitude base that allows a student to adapt. Most importantly, these critical skills are transferable. When industry changes, when entire fields of work and job types are no longer required, it will be the life-ready, critical thinkers who stand the test of time and find new ways to add value.

We are prepared to do things differently at OneSchool Global to deliver on this vision. We challenge traditional and outdated pedagogical models. Our learning centres, the way we embed technology in them, and ultimately our students, are a testament to this.

OneSchool Global Mission Statement



“Learning to Learn”

The School is committed to creating and delivering learning programmes that meet the educational needs of each student, and to nurture the attitudes and skills necessary for the continual learning and personal growth throughout life.

“Learning to Learn” means to use learning as a tool whereby students are equipped with the ability to think critically, process information perceptually, analyse data accurately, and evaluate situations intelligently in order that they fulfil their true potential.

OneSchool Global Values



At OneSchool Global each student, parent and staff member shall uphold the values of the School which include:

Integrity – uprightness, honesty and decorous conduct, governed by the Holy Bible,

Care and Compassion – kindness, consideration and generosity to all,

Respect – for all people, property, opinions and those in authority,

Responsibility – for our actions, progress and the environment and,

Commitment – to self-discipline and the pursuit of excellence.



Welcome Message



Welcome to OneSchool Knockloughrim, a vibrant Campus within the UK region of Oneschool Global.

We are enthused by your interest and are delighted to give you a copy of our School Prospectus, to introduce you to life and work at the School.

OneSchool Global UK have the responsibility of providing the Prospectus, and the professional staff at the School, under the guiding hand of Mr McClelland, our Campus Principal and the Senior leadership Team, carry out the important work of teaching the students.

Everything we do at Oneschool Knockloughrim has the benefit of the students at heart.

We know that the School is privileged to have such an excellent Team of committed staff some of whom have Key Stage Lead and indeed National Curriculum Lead responsibilities.

The commitment and teamwork from all support staff, helpers and parents is immensely evident at Knockloughrim Campus and greatly appreciated by the students especially.

This Prospectus should provide you with all the information you need about the School, but if you do have any further questions please do not hesitate to contact the Campus Principal at the school address.

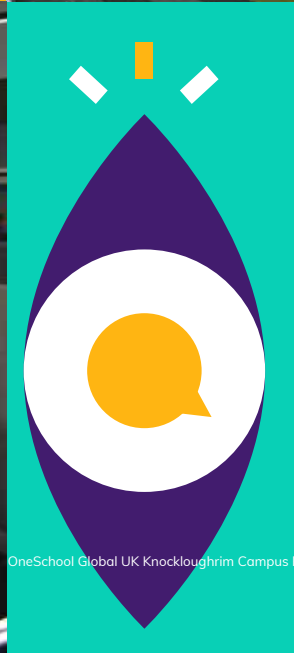
You are more than welcome to make an appointment to visit us and see the School in action.

Mr Ewen Cooper
Lead Campus Administrator



Campus Principal Mr Kris McClelland







Our History



Hydepark Education Trust was established as a registered charity in 1991 for the advancement of education. Primarily educating and tutoring in Community homes in the mid-nineties, it has come a very long way to where it is now as OneSchool Global UK Knockloughrim Campus.

The first campus was based in Hydepark in Mallusk, Newtownabbey, before moving to the present location since 2010 and providing education for students from the Brethren community from Belfast and Derry.

The Campus completed a very exciting stage in its progression, with building work on a major extension of a new Learning Centre and sports hall, with much more to come.

The Global House System



The Global House System is based around the ethos of inclusion and encouraging teamwork.

It is designed to reward academic work, effort, sporting achievements and good citizenship. It is the role of the House System to embrace all students and provide a climate of success for all.

The Global House System consists of three houses each with an assigned colour as shown below. These houses are run globally throughout our affiliated schools, meaning that we can encourage teamwork with other regions, not just within our campus, thus enhancing our students' desire to strive for their best, due to a much wider area of healthy and constructive competition.

Each student is assigned to a House and will normally remain in that House for his/her duration at the campus. Many house events and competitions are run which link to learning and help foster both teamwork and self-directed learning skills. The Global House System encourages healthy participation in activities and is well supported by staff and student leaders.



Charitable Fundraising

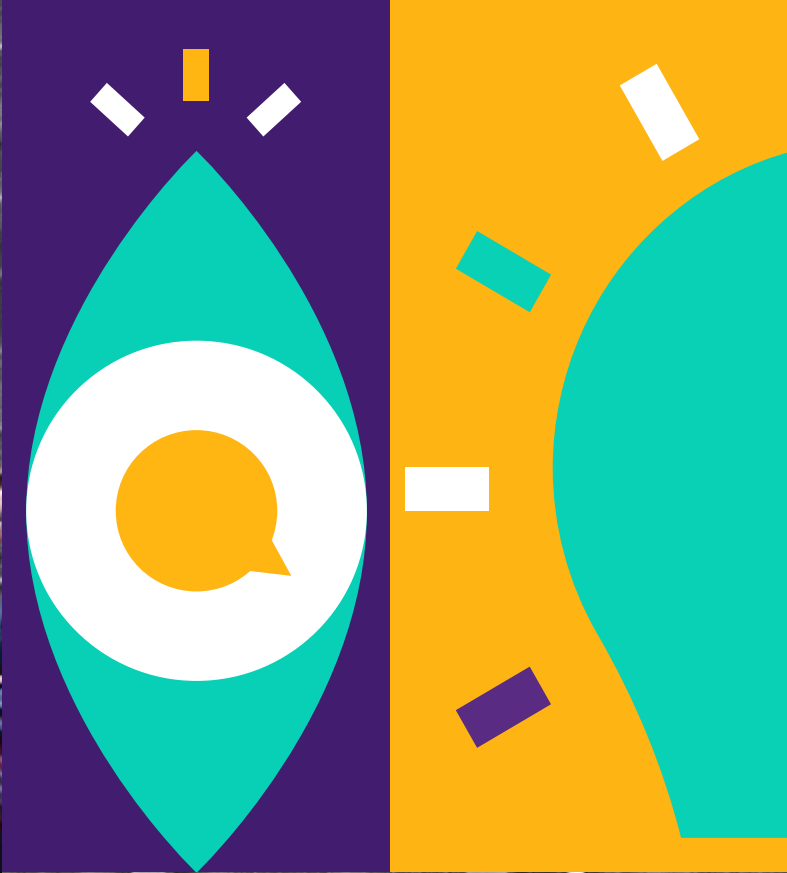


At Knockloughrim Campus the whole community is committed to helping those less fortunate than ourselves.

There is a strong, student-led culture for fundraising and charity at Knockloughrim Campus. The majority of fundraising initiatives are student-led, with representatives from our student council coming up with ideas for school-wide events. Not only does each initiative raise hundreds of pounds for charity, but it also gives students valuable experience in organising and leadership skills.

- Air Ambulance
- Childrens heartbeat





“
Be the
best
you
can
be.
”



Our Curriculum



...wholly supports the School's ethos in promoting Christian values and provides a balance, ensuring students develop academically, aesthetically, morally and physically.

Knockloughrim Campus has adopted the Curriculum Policy developed by OneSchool Global UK. The curriculum is designed to ensure that every student can realise their potential. The curriculum is assignment-based, enabling the self-directed ambition of the organisation to be fulfilled. All students follow a personalised and challenging curriculum.

Years 3-6

Art
Design & Technology
English
Geography
History
IT
LAMDA
Mathematics
MFL
Music
PSHE
Physical Education
Science

Years 7-8

Art
Citizenship
Design & Technology
English
Geography
History
IT
LAMDA
Mathematics
MFL
PSHE
Physical Education
Science

Years 9-11

Art, Craft & Design
Citizenship
Design & Technology
English
Food & Nutrition
French
Geography
German
History
ICT
LAMDA
Mathematics
PSHE
Physical Education
RSE
Science
Spanish

Years 12-13

All of our students progress to the sixth form and are offered a broad range of curriculum options designed to meet the abilities and aspirations of all our learners.

Cambridge International A Level qualifications are offered in Art & Design, Design & Technology, English, History, Geography, Mathematics, Accounts, Law, Business Studies, French and German, and Global Perspectives alongside Cambridge Technical qualifications in IT, Digital & Creative Media, and Business, a range of Level 2 qualifications, and Autodesk Fusion 360.

Additional subjects include Physical Education and PSHE, while courses such as Chef Skills, LAMDA Speaking in Public, London Institute of Banking and Finance and Extended Project Qualifications are available to students.

Digital technology, including Zoom and Canvas platforms enable campuses to collaborate with other schools for subject delivery which enables students to study subjects that would not normally be economically viable

Xello and the Careers Advantage Programme also adds a unique and high quality vocational element to our curriculum which supports all students in gaining a better understanding of their career pathway and progression routes helping to ensure they are life-ready on graduation from OneSchool Global UK and excited about embarking on future post graduate qualifications.

Extra-Curricular activities are a strength of our school. Our students have the opportunity to collaborate on extra-curricular projects and activities at campus, regional and global level. Recent highlights including our termly Choir Festival, annual Public Speaking Competition and inter campus debating opportunities. Our extra-curricular offer is a key part of our curriculum and an area of continuous growth and development for OSUK.

OneSchool Global Awards



The aim of the OneSchool Global Awards programme is to motivate students to achieve across a range of personal and academic qualities. It is a citation based reward system which acknowledges exemplary student behaviour in relation to our values and skills.

The main focus for awarding a citation is based on OneSchool Global Values
Integrity, Care & Compassion, Respect, Responsibility, Commitment.

The value is demonstrated through a OneSchool Global Skill
Academic Achievement, Leadership, Involvement in School Activities, Diligence, Management Skills.



Integrity



Care & Compassion



Respect



Responsibility



Commitment



Citations are key rewards within OneSchool Global and contribute to the achievement of Bronze, Silver, Gold and Platinum Awards.

The OSG Award is inextricably linked to the OSG House Cup. House Points and citations celebrate students who go above and beyond in living our OneSchool Global Values and can demonstrate progression in OneSchool Global Skills.



**Hit the ground
running**

Career Advancement Programme



Bridging the gap between school and work; OneSchool Global UK offer a unique career advancement plan to all our students and this is proven to prepare them for the world of work:

What is CAP?

The Career Advantage Programme (CAP) provides all students with the opportunity to gain the skills and aptitude to achieve rapid success in their post-school careers.

CAP does this by:

- Providing Career Fundamentals and Business Foundations offered to all students in Year 12 and 13.
- Analysing the capability of each student professionally to ensure the student can effectively complete the courses.
- Sponsorship for students to carry out extra-curricular studies in the last two years of school.

The CAP curriculum

All students in Year 12 complete a Career Fundamentals course which is a global standard for employers. For CAP students, the diploma-type courses provide a theoretical and academic rigour which underpins the students' academic programme and the career skills-based study provides practical, real-world approaches to learning and helps them to develop skills and competencies required for lifelong learning.

Visit the website to find out more

<https://www.oneschoolglobal.com/cap/>

Beyond the classroom



Why is CAP Important?

There is an increasing awareness globally that high school studies alone are not adequately preparing students for the modern workforce. The Career Advantage Programme is aimed at equipping our children with the necessary skills to bring positive benefits to our businesses from day one.

Important for students:

- improving their employment opportunities
- improving the potential of earning a higher income on graduation
- empowering rapid progress along their career path

Important for businesses:

- higher value employees that are useful from day one
- employees with an established work ethic; self-starters, self-finishers, self-motivators
- employees that understand the value of study and training

“The innovative approach to the curriculum, teaching and learning is what makes this school outstanding because it enables all pupils to make excellent progress and achieve their very best”



- Business Owner



Policies and Documents

Knockloughrim Campus is committed to the safeguarding and protection of its students in line with national guidance, 'Keeping Learners Safe'. We endeavour to provide a safe and welcoming environment where all children are respected and valued, as well as being underpinned by the following two key principles:

- A child-centred approach; for services to be effective they should be based on a clear understanding of the needs and views of children.
- Everyone employed and who comes into contact with children at Knockloughrim Campus has a responsibility in relation to safeguarding.

At Knockloughrim Campus we listen to students and maintain a child-centred approach to Safeguarding and Child Protection. We provide a safe environment for students both under and over 18, especially those who are considered vulnerable. All of our Policies are available upon request from our school office or via email: knockloughrim@uk.oneschoolglobal.com

Administration of Medicines Policy

Admissions Policy

Anti-Bullying Policy

Attendance Policy

Behaviour Management Policy

Complaints Procedure

Curriculum Policy

EAL Policy

Equal Opportunities Policy

Exclusions Policy

Fire Safety (Prevention) Policy

First Aid Policy

Health & Safety Policy

Learning Support (SEND) Policy

Risk Assessment Policy

RSE Policy

Safeguarding & Child Protection Policy

Safer Recruitment Policy

Supervision of Students Policy

Additionally, the particulars of the arrangements for promoting student health and safety on educational trips and visits are available from the school office on request.

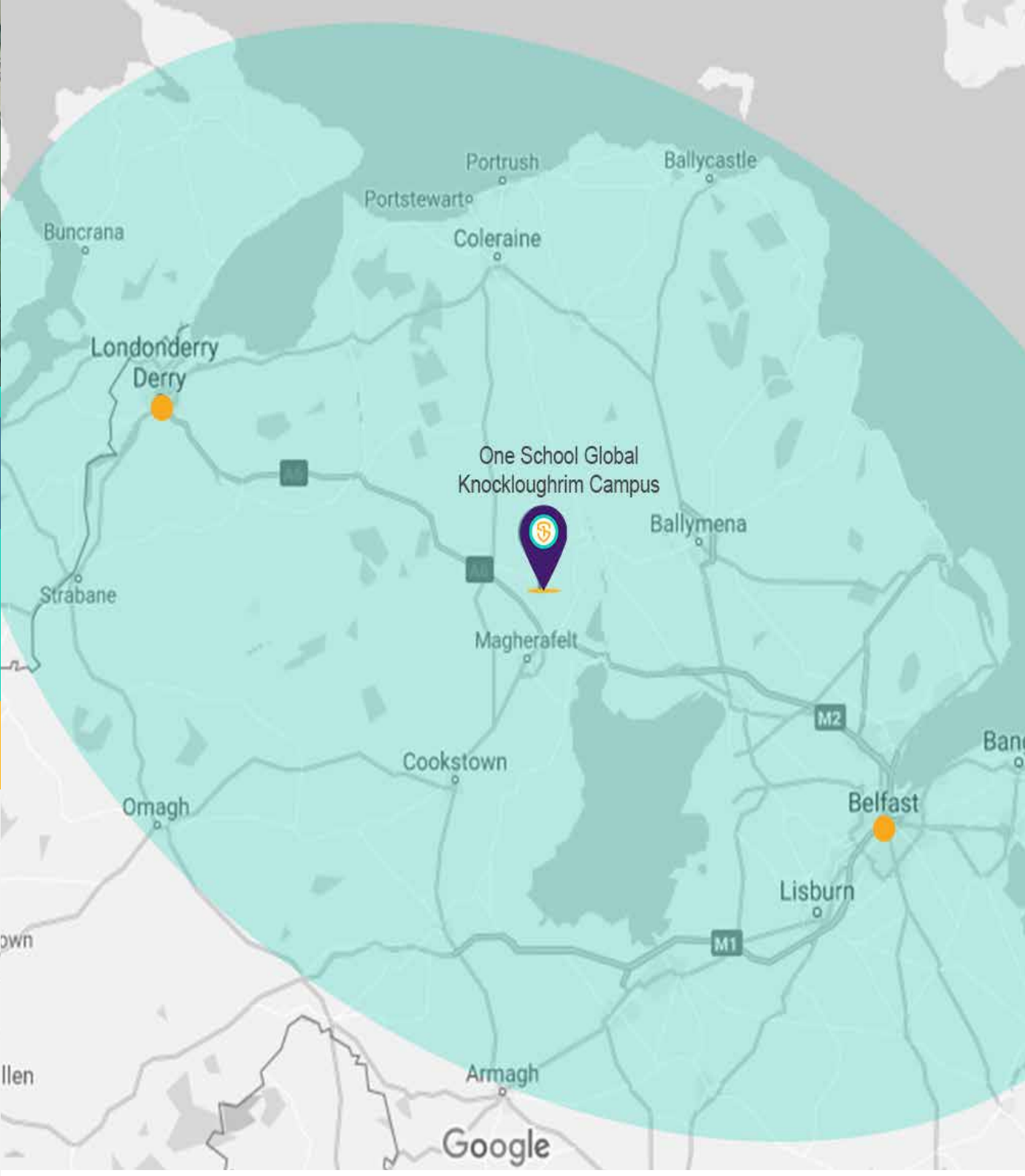
Teachers and Staffing



All OneSchool Global UK Knockloughrim Campus teachers hold qualifications applicable to their post. In the absence of qualifications in some practical subjects previous experience will be considered if applicable. All staff, governors, trustees and volunteers have been subject to regulatory safer recruitment checks.

Name	Assigned Responsibilities	Qualifications
Emma Borthwick	Maths Teacher	BSc (Hons) Mathematics, PGDE
Kerry Carleton	LSA	BSc (Hons) Accounting
Rachael Cunningham	Year 3/4 Teacher DSL	BA (Hons) Early Childhood Studies, PGCE Primary Education with SEN
Louise Dougan	Art & Design Teacher KS4 Lead	BA (Hons) Fine & Applied Art, PGCE
Cobhlaith Fraser	Primary Teacher	BEd & MA
Helen Hansen	KS3 Lead	BSc PGCE
Marie-Clare Kelly (maternity leave) Trudie McAteer (Temporary cover)	KS2 Lead	BLA Religious Studies, PGCE (Primary)
Ann-Louise McGeown	KS5 Lead PSHE Lead	BSc Geography, PGCE Education

Name	Assigned Responsibilities	Qualifications
Cecilia McGowan	Campus Administration Officer H&S Officer	-
Kris McClelland	Campus Principal DT Teacher	BEd
Sara McKeown	Art & Design Technician	BA (Hons) Fine Art
Alice McNeill	LSA & Exams Officer	BEd
Ben Olson	LSCO & DT Teacher	BEd Industrial Arts (DT)
Roisin O'Neill	Year 5/6 Teacher	Bsc (Hons) Theology, PGCE Primary Education
Melanie Reynolds	French Teacher	Licence Commerce International PGCE (Secondary)
Christopher Sweeney	Regional Principal	PGCE (Secondary) Religious Education with Citizenship, LLB



School Information



OneSchool Global UK Knockloughrim Campus

23 Rocktown Road, Knockloughrim,
Magherafelt BT45 8QE

- Tel: 028 796 45191
- knockloughrim@uk.oneschoolglobal.com
- oneschoolglobal.com/knockloughrim

Monday to Friday 08:45 - 15:00

Proprietor: **OneSchool Global UK**

OSG UK No: 102
Examination Centre No. 71438
Charity No: 1181301
DENI No: IS89

Complaints and Exclusions (2022-2023):

There were no complaints or exclusions during the academic year 2022-2023.

CA Team

Mr Ewen Cooper – Lead CA
Mr Gary Auld
Mr Desi Brennan
Mr Vern Walker

EA to CA Team

Campus Board Members

Mr Raymond White
Mr Warren Robb
Mr Jason McMullan
Mr Wayne McMullan
Mr Murray Robertson

Campus Principal

Mr Kris McClelland

OneSchool Global UK Representatives

Mr Neville Smerdon
Mr Christopher Sweeney

Holiday/Out of Hours Contact

Tel: 00 44 7848 454845

Correspondence for the Chair of the Trustees should be addressed to the Principal Office

Mr Neville Smerdon
OneSchool Global Knockloughrim Campus
The Precinct Warwick
Poseidon Way
Warwick
CV34 6BY

For further information and the school calendar please visit our website: oneschoolglobal.com/knockloughrim
Visit the OneSchool Global UK website: www.oneschoolglobal.com



At my time at OneSchool Global Knockloughrim, I found the learning environment very beneficial to help aid my learning. The concept of Self Directed Learning prepares you for what is ahead in the world of work as you have the confidence to take responsibility for your own work. The ability to take ownership of your work puts responsibility on the individual allowing students to plan their day more effectively.

Present Student

Each pupil is treated with the same level of care, time and resource to draw out maximum potential; that is what makes OneSchool Global UK unique.

Parent

OneSchool Global UK is a friendly learning environment for the students and offers regular professional opportunities to the teachers.. Since joining One School, I have become part of a highly effective and supportive team and I have felt part of a strong community. I am passionate in the Learning to Learn pedagogy and Self-directed Learning of One School. It challenges and supports our students and sets them up with the correct skills for life beyond school. The smaller class sizes means that I can really get to know my students and provide the best support for them to progress. Students are a pleasure to teach. They are responsible, polite, have a commitment to their studies and they are always keen to help in any way possible. There is lots of room for career progression too for staff that wish to do so.

Teacher

The Learning to Learn ethos OSG promotes is one of the best skills you can attain at school - this really sets you up for life as you will never stop learning! A desire and willingness to continually learn and achieve your best in any task or situation will bring you many opportunities and open new doors throughout your career and life journey. The whole experience at OneSchool Global prepares you in every way for work and life through the world- leading teaching and learning environments combined with excellent vision and values.

Past Student







OneSchool Global

Learning to learn

OneSchool Global UK Knockloughrim Campus

23 Rocktown Road
Knockloughrim
Magherafelt
BT45 8QE
Tel: 028 796 45191
Email: knockloughrim@uk.oneschoolglobal.com

OneSchool Global UK

The Precinct Warwick
Poseidon Way
Warwick
CV346BY
Tel. 0330 055 5600
Email: support@uk.oneschoolglobal.com