



Newry Campus Prospectus

2023-2024




Introduction

This School is a registered and accredited Independent School established to provide a quality education to the UK community and, in particular, to Brethren students.

The School's Ethos, Values Statement and Guiding Principles govern the School, and are reflected in a series of policies, procedures and handbooks which have been developed to meet statutory and registration requirements and are to be adhered to in all aspects of the operation of the School.

Contents



About OneSchool Global	4
OneSchool Global Ethos	5
OneSchool Global Vision and Mission Statements	6
OneSchool Global Values	7
Welcome	8
History	10
Global House System	11
Our Curriculum	14
OneSchool Awards	15
Career Advancement Programme	16
Policies	18
Teachers and Staffing	19
School Information	20
Testimonials	22

About OneSchool Global UK

OneSchool Global is a global school, with over 130 campuses in 20 countries, including cities such as New York, Paris, Sydney, Rome, Auckland, Copenhagen, Los Angeles and San Francisco.

With an innovative approach to learning, delivered in cutting-edge, technology-empowered physical and digital learning environments, OneSchool Global is preparing life-ready students who learn how to learn.

Our self-directed learning model places students at the centre of all that we do. We challenge traditional and dated pedagogy and embrace technology to deliver the best possible learning outcomes for our students.

OneSchool Global recruits and develops high quality teachers. Our teachers partner with our students in their learning and rather than being considered the 'sage on the stage', play a 'guide on the side role' to support students.

Our in-house Teacher Academy provides teachers with the training they need to be the best they can be. We provide teachers with the skills they need to be successful at OneSchool Global and skills that will make them highly capable and competent in teaching in a digital world.

OneSchool Global is a school that lives its values and is guided by the School's ethos. The School is generously supported via the donation of time and financial support from members of the Plymouth Brethren Christian Church.



[Click on the OneSchool logo to learn more about how this cutting-edge schooling system was inspired and how this awesome vision is being realised.](#)





OneSchool Global Ethos

At OneSchool Global, we are committed to a culture where students are encouraged to develop their full potential and acquire the discipline of learning how to learn while upholding Christian teachings and beliefs.

The truth and authority of the Holy Bible and strong family values underpin the commitment of the School to provide quality in every facet of education - curriculum, teachers, facilities, management, and discipline - in a safe and caring environment.

OneSchool Global Vision Statement



A global education ecosystem that develops life-ready students who learn how to learn and achieve.

To ensure our students are life-ready, we need to teach differently. To be life-ready in today's world, our students need to learn how to learn. To be life ready, our students need to develop independent and critical thinking skills, and skills such as teamwork and collaboration

It is these skills that form an aptitude base that allows a student to adapt. Most importantly, these critical skills are transferable. When industry changes, when entire fields of work and job types are no longer required, it will be the life-ready, critical thinkers who stand the test of time and find new ways to add value.

We are prepared to do things differently at OneSchool Global to deliver on this vision. We challenge traditional and outdated pedagogical models. Our learning centres, the way we embed technology in them, and ultimately our students, are a testament to this.

OneSchool Global Mission Statement



“Learning to Learn”

The School is committed to creating and delivering learning programmes that meet the educational needs of each student, and to nurture the attitudes and skills necessary for the continual learning and personal growth throughout life.

“Learning to Learn” means to use learning as a tool whereby students are equipped with the ability to think critically, process information perceptually, analyse data accurately, and evaluate situations intelligently in order that they fulfil their true potential.



OneSchool Global Values



At OneSchool Global each student, parent and staff member shall uphold the values of the School which include:

Integrity – uprightness, honesty and decorous conduct, governed by the Holy Bible,

Care and Compassion – kindness, consideration and generosity to all,

Respect – for all people, property, opinions and those in authority,

Responsibility – for our actions, progress and the environment and,

Commitment – to self-discipline and the pursuit of excellence.





Welcome Message



Welcome to OneSchool Newry, a vibrant Campus within the UK region of Oneschool Global.

We are enthused by your interest and are delighted to give you a copy of our School Prospectus, to introduce you to life and work at the School.

OneSchool Global UK have the responsibility of providing the Prospectus, and the professional staff at the School, under the guiding hand of Mrs Gregory, our Campus Principal and the Senior leadership Team, carry out the important work of teaching the students.

Everything we do at Oneschool Newry has the benefit of the students at heart.

We know that the School is privileged to have such an excellent Team of committed staff some of whom have Key Stage Lead and indeed National Curriculum Lead responsibilities.

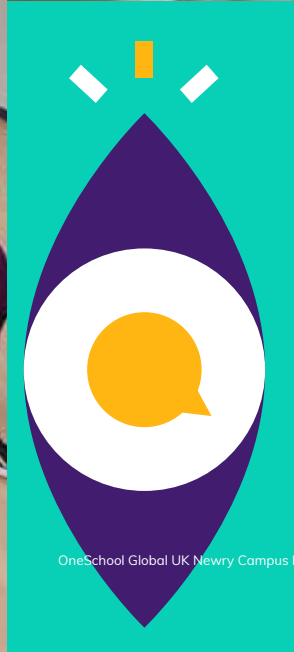
The commitment and teamwork from all support staff, helpers and parents is immensely evident at Newry Campus and greatly appreciated by the students especially.

This Prospectus should provide you with all the information you need about the School, but if you do have any further questions please do not hesitate to contact the Campus Principal at the school address.

You are more than welcome to make an appointment to visit us and see the School in action.

Mr Ewen Cooper
Lead Campus Administrator







Our History



Our school began in September 2003 as Newbridge Study Centre when Christian parents concerned for the protection of their children began to work together to share tutors and resources that were compliant with their Christian beliefs and way of life.

As the School grew and improved a trust was formed and a property secured at Greenbank in Newry in 2013 which is still where the school currently is located. Oneschool Newry is run as an Independent School providing a broad education for students from Year 3 to Year 13.

Focus Learning Trust UK was set up in 2012 as a national educational trust to provide 'direction, management, programs and support' for many similar schools which had been founded around the UK, all of which were established on the same basis. There are now over 30 schools in the UK all affiliated to OneSchool Global UK.

Newry Campus now occupies a completely refurbished building with many specialist facilities. It is generously staffed with professional teachers who are all fully qualified and experienced in their subjects. There are extremely positive relationships between Staff and Trustees, all of whom work hard for the benefit of the students. The strong links between the Primary and Secondary Departments assist transition for students and we currently work very extensively with our sister campus in Knockloughrim as well as taking advantage of a wider selection of subjects and teachers throughout the UK.

Direction and leadership is provided Regionally, Nationally and indeed globally with a very clear structure of management. We have a culture of continuous improvement at Oneschool Newry and the certain constant is change! We will continue to make history on a daily basis going forward.

The Global House System



The Global House System is based around the ethos of inclusion and encouraging teamwork.

It is designed to reward academic work, effort, sporting achievements and good citizenship. It is the role of the House System to embrace all students and provide a climate of success for all.

The Global House System consists of three houses each with an assigned colour as shown below. These houses are run globally throughout our affiliated schools, meaning that we can encourage teamwork with other regions, not just within our campus, thus enhancing our students' desire to strive for their best, due to a much wider area of healthy and constructive competition.

Each student is assigned to a House and will normally remain in that House for his/her duration at the campus. Many house events and competitions are run which link to learning and help foster both teamwork and self-directed learning skills. The Global House System encourages healthy participation in activities and is well supported by staff and student leaders.



Charitable Fundraising



At Newry Campus the whole community is committed to helping those less fortunate than ourselves.

There is a strong, student-led culture for fundraising and charity at Newry Campus. This academic year students have raised money for many charities. The majority of fundraising initiatives are student-led, with representatives from our student council coming up with ideas for school-wide events. Not only does each initiative raise hundreds of pounds for charity, but it also gives students valuable experience in organising and leadership skills.

Charitable donations made recently include:

- Tiny Life
- Shine
- Unicef
- Help for Heroes
- Local Hospice - Newry
- St. Vincent de Paul





“

The students are a super example of honest, determined and focused young people. It is a pleasure to teach at Newry Campus and be part of the journey.

”

Our Curriculum



...wholly supports the School's ethos in promoting Christian values and provides a balance, ensuring students develop academically, aesthetically, morally and physically.

Newry Campus has adopted the Curriculum Policy developed by OneSchool Global UK. The curriculum is designed to ensure that every student can realise their potential. The curriculum is assignment-based, enabling the self-directed ambition of the organisation to be fulfilled. All students follow a personalised and challenging curriculum.

Years 3-6

Art
Design & Technology
English
Geography
History
IT
LAMDA
Mathematics
MFL
Music
PSHE
Physical Education
Science

Years 7-8

Art
Citizenship
Design & Technology
English
Geography
History
IT
LAMDA
Mathematics
MFL
PSHE
Physical Education
Science

Years 9-11

Art, Craft & Design
Citizenship
Design & Technology
English
Food & Nutrition
French
Geography
German
History
ICT
LAMDA
Mathematics
PSHE
Physical Education
RSE
Science

Years 12-13

All of our students progress to the sixth form and are offered a broad range of curriculum options designed to meet the abilities and aspirations of all our learners.

Cambridge International A Level qualifications are offered in Art & Design, Design & Technology, English, History, Geography, Mathematics, Accounts, Law, Business Studies, French and German, and Global Perspectives alongside Cambridge Technical qualifications in IT, Digital & Creative Media, and Business, a range of Level 2 qualifications, and Autodesk Fusion 360.

Additional subjects include Physical Education and PSHE, while courses such as Chef Skills, LAMDA Speaking in Public, London Institute of Banking and Finance and Extended Project Qualifications are available to students.

Digital technology, including Zoom and Canvas platforms enable campuses to collaborate with other schools for subject delivery which enables students to study subjects that would not normally be economically viable

Xello and the Careers Advantage Programme also adds a unique and high quality vocational element to our curriculum which supports all students in gaining a better understanding of their career pathway and progression routes helping to ensure they are life-ready on graduation from OneSchool Global UK and excited about embarking on future post graduate qualifications.

Extra-Curricular activities are a strength of our school. Our students have the opportunity to collaborate on extra-curricular projects and activities at campus regional and global level. Recent highlights including our termly Choir Festival, annual Public Speaking Competition and inter campus debating opportunities. Our extra-curricular offer is a key part of our curriculum and an area of continuous growth and development for OSGUK.

OneSchool Global Awards



The aim of the OneSchool Global Awards programme is to motivate students to achieve across a range of personal and academic qualities. It is a citation based reward system which acknowledges exemplary student behaviour in relation to our values and skills.

The main focus for awarding a citation is based on OneSchool Global Values

Integrity, Care & Compassion, Respect, Responsibility, Commitment.

The value is demonstrated through a OneSchool Global Skill

Academic Achievement, Leadership, Involvement in School Activities, Diligence, Management Skills.



Integrity



Care & Compassion



Respect



Responsibility



Commitment



Citations are key rewards within OneSchool Global and contribute to the achievement of Bronze, Silver, Gold and Platinum Awards.

The OSG Award is inextricably linked to the OSG House Cup. House Points and citations celebrate students who go above and beyond in living our OneSchool Global Values and can demonstrate progression in OneSchool Global Skills.



**Hit the ground
running**

Career Advancement Programme



Bridging the gap between school and work; OneSchool Global UK offer a unique career advancement plan to all our students and this is proven to prepare them for the world of work:

What is CAP?

The Career Advantage Programme (CAP) provides all students with the opportunity to gain the skills and aptitude to achieve rapid success in their post-school careers.

CAP does this by:

- Providing Career Fundamentals and Business Foundations offered to all students in Year 12 and 13.
- Analysing the capability of each student professionally to ensure the student can effectively complete the courses.
- Sponsorship for students to carry out extra-curricular studies in the last two years of school.

The CAP curriculum

All students in Year 12 complete a Career Fundamental course which is a global standard for employers. For CAP students, the diploma-type courses provide a theoretical and academic rigour which underpins the students' academic programme and the career skills-based study provides practical, real-world approaches to learning and helps them to develop skills and competencies required for lifelong learning.

Visit the website to find out more

<https://www.oneschoolglobal.com/cap/>

Beyond the classroom



Why is CAP Important?

There is an increasing awareness globally that high school studies alone are not adequately preparing students for the modern workforce. The Career Advantage Programme is aimed at equipping our children with the necessary skills to bring positive benefits to our businesses from day one.

Important for students:

- improving their employment opportunities
- improving the potential of earning a higher income on graduation
- empowering rapid progress along their career path

Important for businesses:

- higher value employees that are useful from day one
- employees with an established work ethic; self-starters, self-finishers, self-motivators
- employees that understand the value of study and training

“The innovative approach to the curriculum, teaching and learning is what makes this school outstanding because it enables all pupils to make excellent progress and achieve their very best”



- Business Owner



Policies and Documents



Newry Campus is committed to the safeguarding and protection of its students in line with national guidance. We endeavour to provide a safe and welcoming environment where all children are respected, safe and valued, as well as being underpinned by the following two key principles:

- A child-centred approach; for services to be effective they should be based on a clear understanding of the needs and views of children.
- Everyone employed and who comes into contact with children at Newry Campus has a responsibility in relation to safeguarding.

At Newry Campus we listen to students and maintain a child-centred approach to Safeguarding and Child Protection. We provide a safe environment for students both under and over 18, especially those who are considered vulnerable. All of our Policies are available upon request from our school office or via email: newry@uk.oneschoolglobal.com

Administration of Medicines Policy

Admissions Policy

Anti-Bullying Policy

Attendance Policy

Behaviour Management Policy

Complaints Procedure

Curriculum Policy

EAL Policy

Equal Opportunities Policy

Exclusions Policy

Fire Safety (Prevention) Policy

First Aid Policy

Health & Safety Policy

Learning Support (SEND) Policy

Risk Assessment Policy

RSE Policy

Safeguarding & Child Protection Policy

Safer Recruitment Policy

Supervision of Students Policy

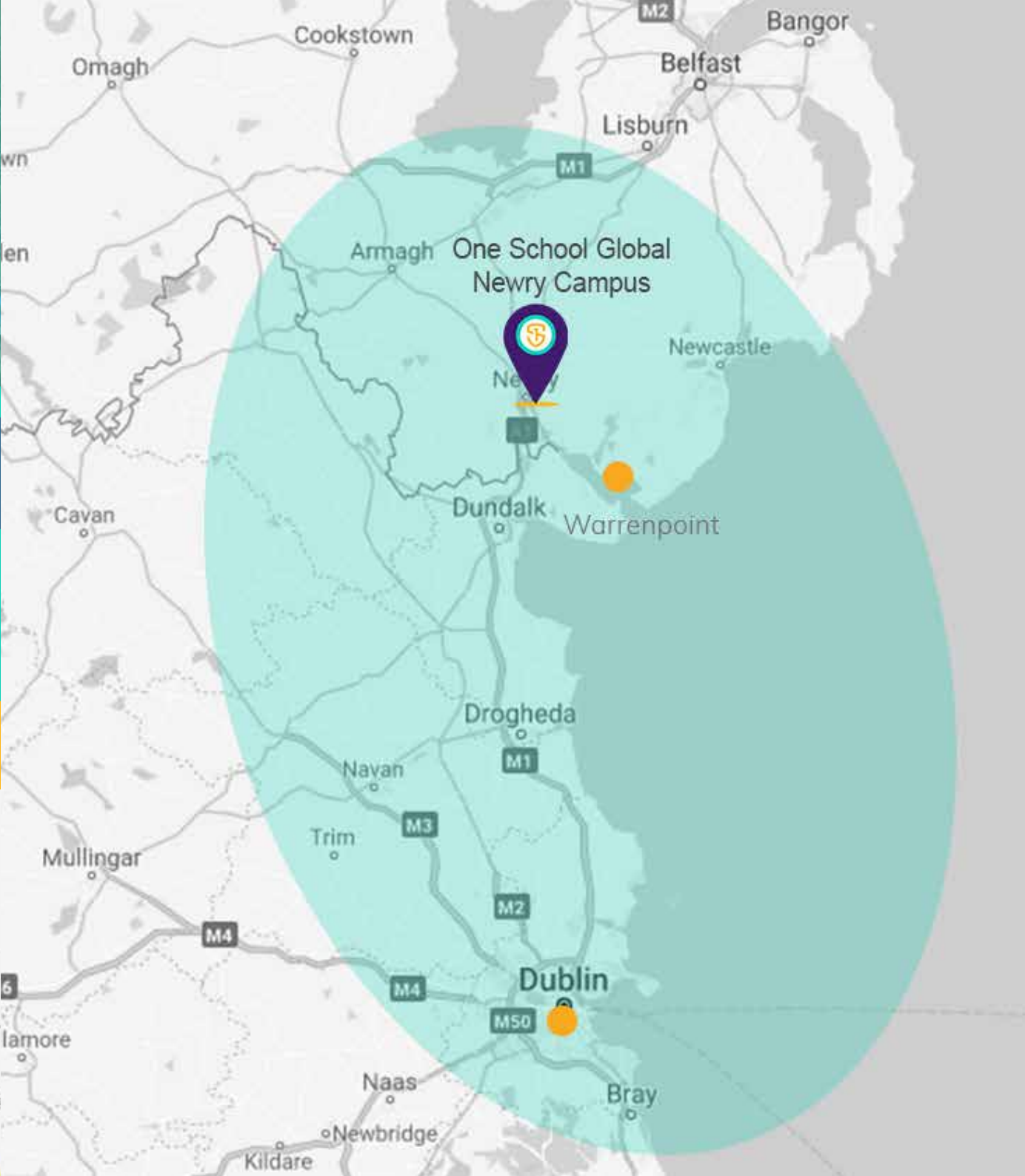
Additionally, the particulars of the arrangements for promoting student health and safety on educational trips and visits are available from the school office on request.

Teachers and Staffing



All OneSchool Global UK Newry Campus teachers hold qualifications applicable to their post. In the absence of qualifications in some practical subjects previous experience will be considered if applicable. All staff, governors, trustees and volunteers have been subject to regulatory safer recruitment checks.

Name	Assigned Responsibilities	Qualifications	Name	Assigned Responsibilities	Qualifications
Mrs Louise Dougan	KS3 & 4 Art KS4 Progress Lead	BA (Hons) PGCE	Mr Stephen Murphy	Regional Head of Geography Department A Level & GCSE Geography KS3-5 Boys PE	BA (Hons), PDGE
Mrs Julie Gregory	Campus Principal Maths, DDSL	B Ed	Mr Ben Olson	LSCO & DT Teacher	BEd Industrial Arts (DT)
Mrs Helen Hansen	Key Stage 3 Progress Lead Science KS2-5 PE Girls Digital Mastery Coach Dyknow Co-ordinator EPQ Co-ordinator	BSC PGCE	Miss Terri Quinn	Learning Support Assistant	City & Guilds level 3 & 5 Diploma in Leadership and Children's Care
Miss Trudie McAteer	Key Stage 2 Progress Lead Primary Teacher, DSL	B Ed	Miss Lauren Rooney	Pupil Care Assistant Exams Officer	Certificate in Education and CACHE



School Information



OneSchool Global UK Newry Campus

22a Rampart Road, Greenbank, Newry BT34 2QU

- Tel: 028 3026 0777
- newry@uk.oneschoolglobal.com
- oneschoolglobal.com/newry

Monday to Friday 08:45 - 15:00

Proprietor: **OneSchool Global UK**

OSG UK No: 112
Examination Centre No. 71784
Charity No: 1181301
DfE No: IS88

Complaints and Exclusions (2022-2023):

There were no complaints or exclusions during the academic year 2022-2023.

CA Team

Mr Ewen Cooper - LCA
Mr Desi Brennan
Mr Gary Auld

Campus Board Members

Mr Jason McMullan
Mr Murray Robertson
Mr Raymond White
Mr Warren Robb
Mr Wayne McMullan

Campus Principal

Mrs Julie Gregory

OneSchool Global UK Representatives

Mr Neville Smerdon
Mr Christopher Sweeney

Holiday/Out of Hours Contact

Tel: 00 44 7848 453244

Correspondence for the Chair of the Trustees should be addressed to the Principal Office

Mr Neville Smerdon
OneSchool Global Newry Campus
The Precinct Warwick
Poseidon Way
Warwick
CV34 6BY

For further information and the school calendar please visit our website: oneschoolglobal.com/newry
Visit the OneSchool Global UK website: www.oneschoolglobal.com



Oneschool Global is an immensely effective schooling system. With so many platforms to guide us through our school years, we are immediately life-ready students as soon as we step away from school.

Student

Canvas and zoom are a seamless part of our education allowing us as students to strive to reach our full potential.

Student

We are a small close-knit community here at Newry Campus and that's what makes it a great place to teach every day. The students are committed to their studies and strive to do their best in each lesson.

Staff





Recognition of Excellence

15 October 2023



OneSchool Global

Learning to learn

OneSchool Global UK Newry Campus

22a Rampart Road
Greenbank
Newry
BT34 2QU
Tel: 028 3026 0777
Email: newry@uk.oneschoolglobal.com

OneSchool Global UK

The Precinct Warwick
Poseidon Way
Warwick
CV346BY
Tel. 0330 055 5600
Email: support@uk.oneschoolglobal.com