



Swansea Campus Prospectus

2023-2024




Introduction

This School is a registered and accredited Independent School established to provide a quality education to the UK community and, in particular, to Brethren students.

The School's Ethos, Values Statement and Guiding Principles govern the School, and are reflected in a series of policies, procedures and handbooks which have been developed to meet statutory and registration requirements and are to be adhered to in all aspects of the operation of the School.

Contents



About OneSchool Global	4
OneSchool Global Ethos	5
OneSchool Global Vision and Mission Statements	6
OneSchool Global Values	7
Welcome	8
History	10
Global House System	11
Our Curriculum	14
OneSchool Awards	15
Career Advancement Programme	16
Policies	18
Teachers and Staffing	19
School Information	20
Testimonials	22

About OneSchool Global UK

OneSchool Global is a global school, with over 130 campuses in 20 countries, including cities such as New York, Paris, Sydney, Rome, Auckland, Copenhagen, Los Angeles and San Francisco.

With an innovative approach to learning, delivered in cutting-edge, technology-empowered physical and digital learning environments, OneSchool Global is preparing life-ready students who learn how to learn.

Our self-directed learning model places students at the centre of all that we do. We challenge traditional and dated pedagogy and embrace technology to deliver the best possible learning outcomes for our students.

OneSchool Global recruits and develops high quality teachers. Our teachers partner with our students in their learning and rather than being considered the 'sage on the stage', play a 'guide on the side role' to support students.

Our in-house Teacher Academy provides teachers with the training they need to be the best they can be. We provide teachers with the skills they need to be successful at OneSchool Global and skills that will make them highly capable and competent in teaching in a digital world.

OneSchool Global is a school that lives its values and is guided by the School's ethos. The School is generously supported via the donation of time and financial support from members of the Plymouth Brethren Christian Church.



[Click on the OneSchool logo to learn more about how this cutting-edge schooling system was inspired and how this awesome vision is being realised.](#)





OneSchool Global Ethos

At OneSchool Global, we are committed to a culture where students are encouraged to develop their full potential and acquire the discipline of learning how to learn while upholding Christian teachings and beliefs.

The truth and authority of the Holy Bible and strong family values underpin the commitment of the School to provide quality in every facet of education - curriculum, teachers, facilities, management, and discipline - in a safe and caring environment.

OneSchool Global Vision Statement



A global education ecosystem that develops life-ready students who learn how to learn and achieve.

To ensure our students are life-ready, we need to teach differently. To be life-ready in today's world, our students need to learn how to learn. To be life ready, our students need to develop independent and critical thinking skills, and skills such as teamwork and collaboration

It is these skills that form an aptitude base that allows a student to adapt. Most importantly, these critical skills are transferable. When industry changes, when entire fields of work and job types are no longer required, it will be the life-ready, critical thinkers who stand the test of time and find new ways to add value.

We are prepared to do things differently at OneSchool Global to deliver on this vision. We challenge traditional and outdated pedagogical models. Our learning centres, the way we embed technology in them, and ultimately our students, are a testament to this.

OneSchool Global Mission Statement



“Learning to Learn”

The School is committed to creating and delivering learning programmes that meet the educational needs of each student, and to nurture the attitudes and skills necessary for the continual learning and personal growth throughout life.

“Learning to Learn” means to use learning as a tool whereby students are equipped with the ability to think critically, process information perceptually, analyse data accurately, and evaluate situations intelligently in order that they fulfil their true potential.

OneSchool Global Values

At OneSchool Global each student, parent and staff member shall uphold the values of the School which include:

Integrity – uprightness, honesty and decorous conduct, governed by the Holy Bible,

Care and Compassion – kindness, consideration and generosity to all,

Respect – for all people, property, opinions and those in authority,

Responsibility – for our actions, progress and the environment and,

Commitment – to self-discipline and the pursuit of excellence.





Welcome Message



Welcome to OneSchool Global UK Swansea Campus

We are your local campus of a truly global school, where our students are given the freedom and resources to self-direct their learning, with a balanced curriculum to ensure they achieve their full potential.

“Learning to learn” is at the heart of the way we operate at OneSchool Global. This takes place in the Learning Center; a flexible space which is split into zones to help the students navigate their journeys, utilising both teacher and peer support and Video Conference connected lessons with other OneSchool Campuses.

This enabled OneSchool Global Swansea Campus to become an online school almost overnight in March 2020, therefore giving the students the best chance to continue their learning during outwardly difficult times.

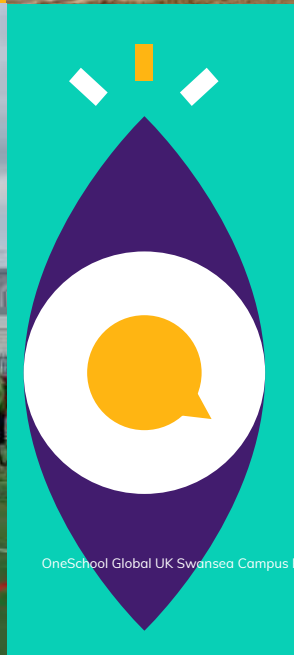
Our aim is to reach a level of “Excellence in Education” through a cutting-edge delivery from our teaching team with results that are being driven and achieved - assisting the students to plan to be life ready and the “best that they can be”.

Integrity, respect, responsibility, commitment, care and compassion are the OneSchool values that we all hold, whether a student, a professional, or a volunteer on Campus.

Please come and visit to see us in action!

Mr Eddie Swanson
Lead Campus Administrator







Our History



OneSchool Global UK Swansea Campus started out in September 2003 as Focus School Swansea Campus, Keystone Education Trust, situated on the first floor of a business premises, with just 16 students from Year 7 to 12. The school grew, in every sense of the word, and in September 2005 we purchased a large modular building, located on the land at the rear of the premises and the school moved in. This site was expanded over the following 9 years with an assortment of other portable cabins.

In 2010, we acquired an old Victorian school building, just 8 miles from our Secondary school site, and opened a Primary department.

In 2014, we were thrilled to trade-in our cabins and ageing Victorian Primary school for a solid 3-storey concrete structure, an ex-fire service building. Our Primary and Secondary departments merged to become one school, Years 3 to 13 we now have 33 pupils for the academic year 2022/23.

The Global House System



The Global House System is based around the ethos of inclusion and encouraging teamwork.

It is designed to reward academic work, effort, sporting achievements and good citizenship. It is the role of the House System to embrace all students and provide a climate of success for all.

The Global House System consists of three houses each with an assigned colour as shown below. These houses are run globally throughout our affiliated schools, meaning that we can encourage teamwork with other regions, not just within our campus, thus enhancing our students' desire to strive for their best, due to a much wider area of healthy and constructive competition.

Each student is assigned to a House and will normally remain in that House for his/her duration at the campus. Many house events and competitions are run which link to learning and help foster both teamwork and self-directed learning skills. The Global House System encourages healthy participation in activities and is well supported by staff and student leaders.



Charitable Fundraising

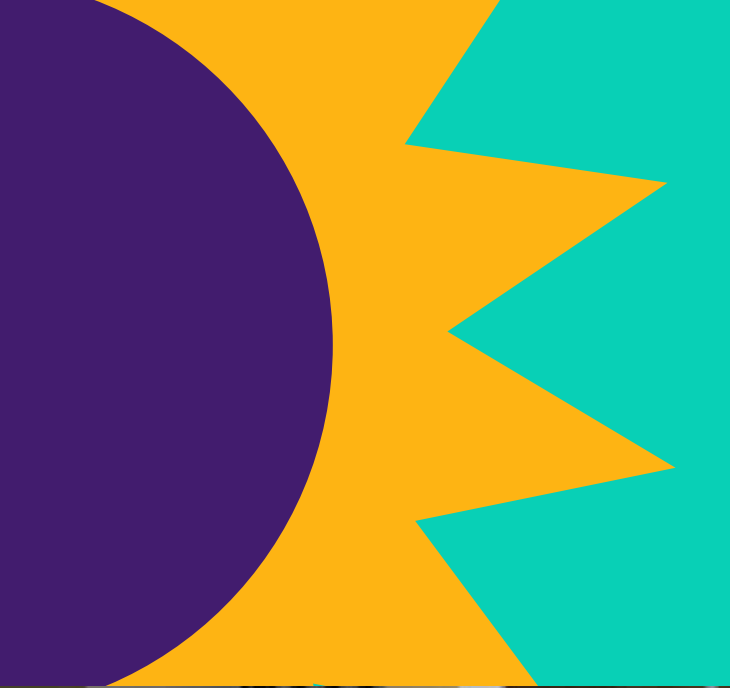


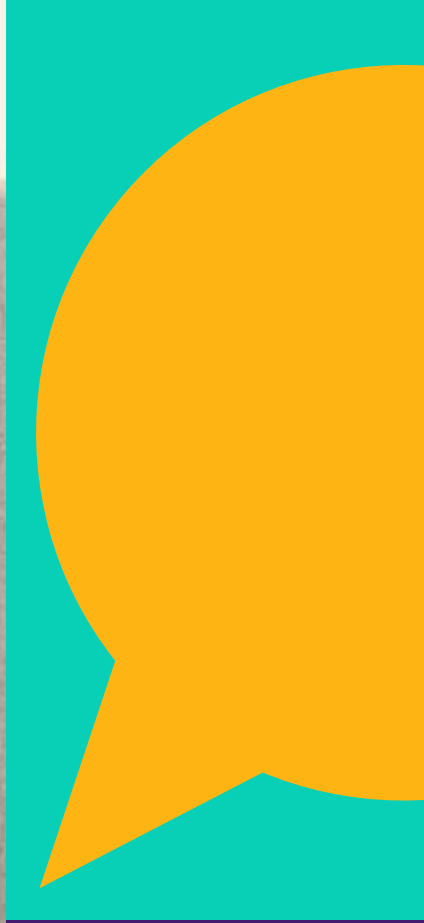
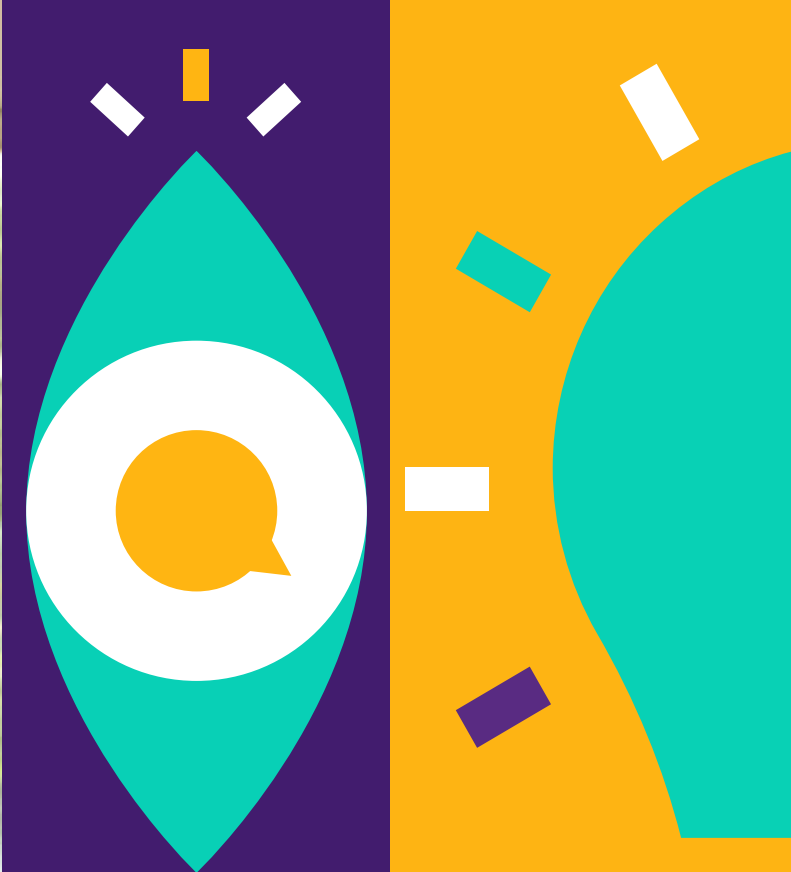
At Swansea Campus the whole community is committed to helping those less fortunate than ourselves.

There is a strong, student-led culture for fundraising and charity at Swansea Campus. The majority of fundraising initiatives are student-led, with representatives from our student council coming up with ideas for school-wide events. Not only does each initiative raise hundreds of pounds for charity, but it also gives students valuable experience in organising and leadership skills.

Charitable donations made recently include:

- Fairtrade
- Adref (homeless charity)
- Kids Cancer Charity
- Ty Hafan
- Guide Dogs for the Blind
- Wales Air Ambulance
- Macmillan
- Cancer Research UK
- The Noah's Ark Appeal (Children's hospital)
- Ukraine Appeal
- George Thomas Hospice





“

It was a real pleasure to teach at your school...your pupils were superb!

”

Our Curriculum



...wholly supports the School's ethos in promoting Christian values and provides a balance, ensuring students develop academically, aesthetically, morally and physically.

Swansea Campus has adopted the Curriculum Policy developed by OneSchool Global UK. The curriculum is designed to ensure that every student can realise their potential. The curriculum is assignment-based, enabling the self-directed ambition of the organisation to be fulfilled. All students follow a personalised and challenging curriculum.

Years 3-6

Art
Design & Technology
English
Geography
History
IT
LAMDA
Mathematics
MFL
Music
PSHE
Physical Education
Science

Years 7-8

Art
Citizenship
Design & Technology
English
Geography
History
LAMDA
Mathematics
MFL
PSHE
Physical Education
Science

Years 9-11

Art, Craft & Design
Citizenship
Design & Technology
English
Food & Nutrition
French
Geography
History
ICT
LAMDA
Mathematics
PSHE
Physical Education
RSE
Science
Spanish

Years 12-13

All of our students progress to the sixth form and are offered a broad range of curriculum options designed to meet the abilities and aspirations of all our learners.

Cambridge International A Level qualifications are offered in Art & Design, Design & Technology, English, History, Geography, Mathematics, Accounts, Law, Business Studies, French and German, and Global Perspectives alongside Cambridge Technical qualifications in IT, Digital & Creative Media, and Business, a range of Level 2 qualifications, and Autodesk Fusion 360.

Additional subjects include Physical Education and PSHE, while courses such as Chef Skills, LAMDA Speaking in Public, London Institute of Banking and Finance and Extended Project Qualifications are available to students.

Digital technology, including Zoom and Canvas platforms enable campuses to collaborate with other schools for subject delivery which enables students to study subjects that would not normally be economically viable.

Xello and the Careers Advantage Programme also adds a unique and high quality vocational element to our curriculum which supports all students in gaining a better understanding of their career pathway and progression routes helping to ensure they are lifeready on graduation from OneSchool Global UK and excited about embarking on future post graduate qualifications.

Extra-Curricular activities are a strength of our school. Our students have the opportunity to collaborate on extra-curricular projects and activities at campus, regional and global level. Recent highlights including our termly Choir Festival, annual Public Speaking Competition and inter campus debating opportunities. Our extra-curricular offer is a key part of our curriculum and an area of continuous growth and development for OSGUK.

OneSchool Global Awards



The aim of the OneSchool Global Awards programme is to motivate students to achieve across a range of personal and academic qualities. It is a citation based reward system which acknowledges exemplary student behaviour in relation to our values and skills.

The main focus for awarding a citation is based on OneSchool Global Values
Integrity, Care & Compassion, Respect, Responsibility, Commitment.

The value is demonstrated through a OneSchool Global Skill
Academic Achievement, Leadership, Involvement in School Activities, Diligence, Management Skills.



Integrity



Care & Compassion



Respect



Responsibility



Commitment



Citations are key rewards within OneSchool Global and contribute to the achievement of Bronze, Silver, Gold and Platinum Awards.

The OSG Award is inextricably linked to the OSG House Cup. House Points and citations celebrate students who go above and beyond in living our OneSchool Global Values and can demonstrate progression in OneSchool Global Skills.



**Hit the ground
running**

Career Advancement Programme



Bridging the gap between school and work; OneSchool Global UK offer a unique career advancement plan to all our students and this is proven to prepare them for the world of work:

What is CAP?

The Career Advantage Programme (CAP) provides all students with the opportunity to gain the skills and aptitude to achieve rapid success in their post-school careers.

CAP does this by:

- Providing Career Fundamentals and Business Foundations offered to all students in Year 12 and 13.
- Analysing the capability of each student professionally to ensure the student can effectively complete the courses.
- Sponsorship for students to carry out extra-curricular studies in the last two years of school.

The CAP curriculum

All students in Year 12 complete a Career Fundamentals course which is a global standard for employers. For CAP students, the diploma-type courses provide a theoretical and academic rigour which underpins the students' academic programme and the career skills-based study provides practical, real-world approaches to learning and helps them to develop skills and competencies required for lifelong learning.

Visit the website to find out more

<https://www.oneschoolglobal.com/cap/>

Beyond the classroom



Why is CAP Important?

There is an increasing awareness globally that high school studies alone are not adequately preparing students for the modern workforce. The Career Advantage Programme is aimed at equipping our children with the necessary skills to bring positive benefits to our businesses from day one.

Important for students:

- improving their employment opportunities
- improving the potential of earning a higher income on graduation
- empowering rapid progress along their career path

Important for businesses:

- higher value employees that are useful from day one
- employees with an established work ethic; self-starters, self-finishers, self-motivators
- employees that understand the value of study and training

"Cap is a win-win concept for employers and employees alike. When employing young people, readiness for the 'real world' of work is one of the biggest challenges. With Cap a business has invested in a student and the student has completed 100 hours of paid work experience per year. This means the work experience is taken seriously and is long enough for the student to do real work in a number of meaningful roles. The result is a student with a much better idea of what career choices they may wish to pursue and greater focus as a result. The benefits of this to employers quickly become evident, as school-leavers enter the workplace ready to hit the ground running."

- Business Owner



Policies and Documents



Swansea Campus is committed to the safeguarding and protection of its students in line with national guidance.. We endeavour to provide a safe and welcoming environment where all children are safe, respected and valued, as well as being underpinned by the following two key principles:

- A child-centred approach; for services to be effective they should be based on a clear understanding of the needs and views of children.
- Everyone employed and who comes into contact with children at Swansea Campus has a responsibility in relation to safeguarding.

At Swansea Campus we listen to students and maintain a child-centred approach to Safeguarding and Child Protection. We provide a safe environment for students both under and over 18, especially those who are considered vulnerable. All of our Policies are available upon request from our school office or via email: swansea@uk.oneschoolglobal.com

Administration of Medicines Policy

Admissions Policy

Anti-Bullying Policy

Attendance Policy

Behaviour Management Policy

Complaints Procedure

Curriculum Policy

EAL Policy

Equal Opportunities Policy

Exclusions Policy

Fire Safety (Prevention) Policy

First Aid Policy

Health & Safety Policy

Learning Support (SEND) Policy

Risk Assessment Policy

RSE Policy

Safeguarding & Child Protection Policy

Safer Recruitment Policy

Supervision of Students Policy

Additionally, the particulars of the arrangements for promoting student health and safety on educational trips and visits are available from the school office on request.

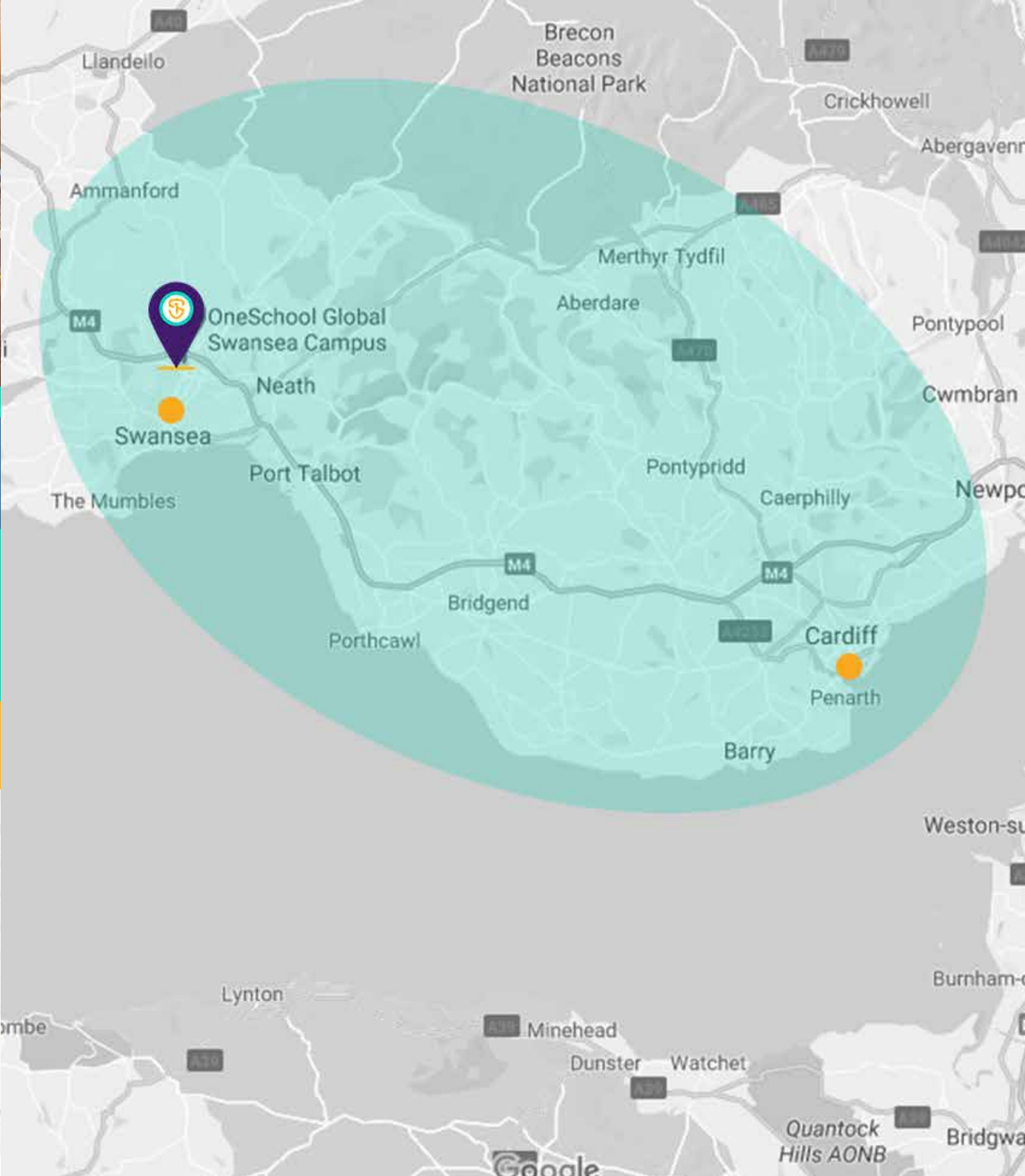
Teachers and Staffing



All OneSchool Global UK Swansea Campus teachers hold qualifications applicable to their post. In the absence of qualifications in some practical subjects previous experience will be considered if applicable. All staff, governors, trustees and volunteers have been subject to regulatory safer recruitment checks.

Name	Assigned Responsibilities	Qualifications
David Brook	Associate Principal	BA Hons English, PGCE
Eleanor Challenger	History Teacher Literacy Strategy Coordinator MACO	BA Hons Ancient History PGCE
David Cheval	SMSH Lead 6th Form Tutor Chemistry Teacher PSHE Teacher	BSc Chemistry, PGCE
Elizabeth Dainty	RHOD English, LAMDA, Wellbeing Lead	BA English Language PGCE
Callum Dainty	KS2 Lead Primary Lead	BA Hons Primary Education Studies PGCE, NPQSL
Vaughan Davies	Science Geography, EPQ Coordinator Physical Education Lead CAP Coordinator 6th Form Tutor	BSc Hons Sport & Exercise Sciences PE PGCE
Sarah Fyans	Art Design Technology	BSc Product Design PGCE
Sallyanne Greenslade	Campus Principal DDSL - Safeguarding	NPQSL BEd (Hons) Business KSPD AAT
Beth Grey	HTLA	NNEB Nursery Nursing, Oral Skills Nursery Nursing, Speech & Language Support Level 2

Name	Assigned Responsibilities	Qualifications
Dr Neil Howe	National cover for History Geography English Citizenship Global Perspectives Exams Officer	Associate of The Higher Education Academy PGCE Doctor of Philosophy MA Historical Studies BA History
Paul Piontecki	Premises Manager	Electrician Mechanical Maintenance Craftsman Site Safety Plus First Aid at Work EITB Certificate
Rachel Pompa	Campus Admin Officer	-
Andrew Portsmouth	Assistant Campus Principal DSL - Safeguarding A-level Physics ARHOD Science, KS5 Lead, Digital Mastery Champion- incl. Lead on ICT & Canvas maintenance NQT Coordinator, Data Protection Officer	BSc Hons Physics with Laser PGCE
Anita Reulier-Davies	French Food Studies	Degree in Business French (GTP)
Angharad Thomas	Assistant Campus Principal DDSL - Safeguarding Maths; Physical Education Numeracy Coordinator, KS3&4 Lead, DSNHL, SENCO, Health & Safety Lead, Teaching & Learning Lead Yrs. 3-13 Estyn Peer Inspector Senior Mental Health lead	BA Econ PGCE
Sharon Wells	Campus Admin Officer Exam administration	-
Dawn White	Teaching Assistant	Level 3 TA



School Information



OneSchool Global UK Swansea Campus

Sway Road, Morriston, Swansea, SA6 6JA

- Tel: 01792 581221
- swansea@uk.oneschoolglobal.com
- www.oneschoolglobal.com/swansea

Monday to Friday 08:45 - 15:00

Proprietor: **OneSchool Global UK**

OSG UK No: 614
Examination Centre No. 68888
Charity No: 1181301
DfE No: 670/6023

Complaints and Exclusions (2022-2023):

There were 0 formal and 3 informal complaints resolved, 0 exclusions during the academic year 2022-2023.

CA Team

Mr Eddie Swanson - Lead CA
Mr Alex Nunn

Campus Board Members

Mr Gavin Sims
Mr Maxwell Dormer
Mr Daniel Robins
Mr Nigel Hill
Mr Simon Rusling

Campus Principal

Mrs Sallyanne Greenslade

OSG UK Representatives

Mr Terry Mitchell
Mrs Sarah Bennett

Holiday/Out of Hours Contact

Mr Paul Piontecki Tel: 07783 482165
email:
paul.piontecki@uk.oneschoolglobal.com

Correspondence for the Chair of the Trustees should be addressed to the Principal Office

Mr Terry Mitchell
OneSchool Global UK Swansea Campus
The Precinct Wawick
Poseidon Way
Warwick
CV364 6BY

For further information and the school calendar please visit our website: www.oneschoolglobal.com/swansea

Visit the OneSchool Global UK website: www.oneschoolglobal.com



It's a fab place to work and I look forward to coming here every day. The old saying 'Choose a job you love and you'll never work a day in your whole life' is never truer than here as it's a complete privilege to contribute in an environment like this one.

Teacher

I find that my children are engaged with learning and enthused about school.

Parent

Our school is very unique from other schools in the area as it has taken on the concept of self-directed learning. As a result it has an outstanding culture of excellence and an unparalleled work ethic.

Student







OneSchool Global

Learning to learn

OneSchool Global UK Swansea Campus

Sway Road
Morrison
Swansea
SA6 6JA
Tel: 01792 581221
Email: swansea@uk.oneschoolglobal.com

OneSchool Global UK

The Precinct Wawick
Poseidon Way
Warwick
CV346BY
Tel. 0330 055 5600
Email: support@uk.oneschoolglobal.com