



Bristol Campus **Prospectus**

2023-2024



Introduction

This School is a registered and accredited Independent School established to provide a quality education to the UK community and, in particular, to Brethren students.

The School's Ethos, Values Statement and Guiding Principles govern the School, and are reflected in a series of policies, procedures and handbooks which have been developed to meet statutory and registration requirements and are to be adhered to in all aspects of the operation of the School.

Contents



About OneSchool Global	4
OneSchool Global Ethos	5
OneSchool Global Vision and Mission Statements	6
OneSchool Global Values	7
Welcome	8
History	10
Global House System	11
Our Curriculum	14
OneSchool Awards	15
Career Advancement Programme	16
Policies	18
Teachers and Staffing	19
School Information	20
Testimonials	22

About OneSchool Global UK

OneSchool Global is a global school, with over 130 campuses in 20 countries, including cities such as New York, Paris, Sydney, Rome, Auckland, Copenhagen, Los Angeles and San Francisco.

With an innovative approach to learning, delivered in cutting-edge, technology-empowered physical and digital learning environments, OneSchool Global is preparing life-ready students who learn how to learn.

Our self-directed learning model places students at the centre of all that we do. We challenge traditional and dated pedagogy and embrace technology to deliver the best possible learning outcomes for our students.

OneSchool Global recruits and develops high quality teachers. Our teachers partner with our students in their learning and rather than being considered the 'sage on the stage', play a 'guide on the side role' to support students.

Our in-house Teacher Academy provides teachers with the training they need to be the best they can be. We provide teachers with the skills they need to be successful at OneSchool Global and skills that will make them highly capable and competent in teaching in a digital world.

OneSchool Global is a school that lives its values and is guided by the School's ethos. The School is generously supported via the donation of time and financial support from members of the Plymouth Brethren Christian Church.



[Click on the OneSchool logo to learn more about how this cutting-edge schooling system was inspired and how this awesome vision is being realised.](#)





OneSchool Global Ethos

At OneSchool Global, we are committed to a culture where students are encouraged to develop their full potential and acquire the discipline of learning how to learn while upholding Christian teachings and beliefs.

The truth and authority of the Holy Bible and strong family values underpin the commitment of the School to provide quality in every facet of education - curriculum, teachers, facilities, management, and discipline - in a safe and caring environment.

OneSchool Global Vision Statement



A global education ecosystem that develops life-ready students who learn how to learn and achieve.

To ensure our students are life-ready, we need to teach differently. To be life-ready in today's world, our students need to learn how to learn. To be life ready, our students need to develop independent and critical thinking skills, and skills such as teamwork and collaboration

It is these skills that form an aptitude base that allows a student to adapt. Most importantly, these critical skills are transferable. When industry changes, when entire fields of work and job types are no longer required, it will be the life-ready, critical thinkers who stand the test of time and find new ways to add value.

We are prepared to do things differently at OneSchool Global to deliver on this vision. We challenge traditional and outdated pedagogical models. Our learning centres, the way we embed technology in them, and ultimately our students, are a testament to this.

OneSchool Global Mission Statement



“Learning to Learn”

The School is committed to creating and delivering learning programmes that meet the educational needs of each student, and to nurture the attitudes and skills necessary for the continual learning and personal growth throughout life.

“Learning to Learn” means to use learning as a tool whereby students are equipped with the ability to think critically, process information perceptually, analyse data accurately, and evaluate situations intelligently in order that they fulfil their true potential.

OneSchool Global Values



At OneSchool Global each student, parent and staff member shall uphold the values of the School which include:

Integrity – uprightness, honesty and decorous conduct, governed by the Holy Bible,

Care and Compassion – kindness, consideration and generosity to all,

Respect – for all people, property, opinions and those in authority,

Responsibility – for our actions, progress and the environment and,

Commitment – to self-discipline and the pursuit of excellence.



Campus Principal Mrs Emma Bryson



Welcome Message



A warm welcome to OneSchool Global UK Bristol Campus – part of OneSchool Global.

Within our doors, you will find an ecosystem that receives young people in all their vitality, unleashes their potential and develops life-ready students. Here, we provide a happy, vibrant and motivating world of learning for our students.

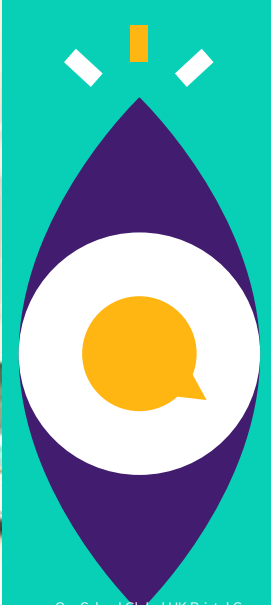
Our core philosophy is contained in our tag line 'Learning to Learn' and is brought to life through our ambitious and ground-breaking culture of self-directed learning.

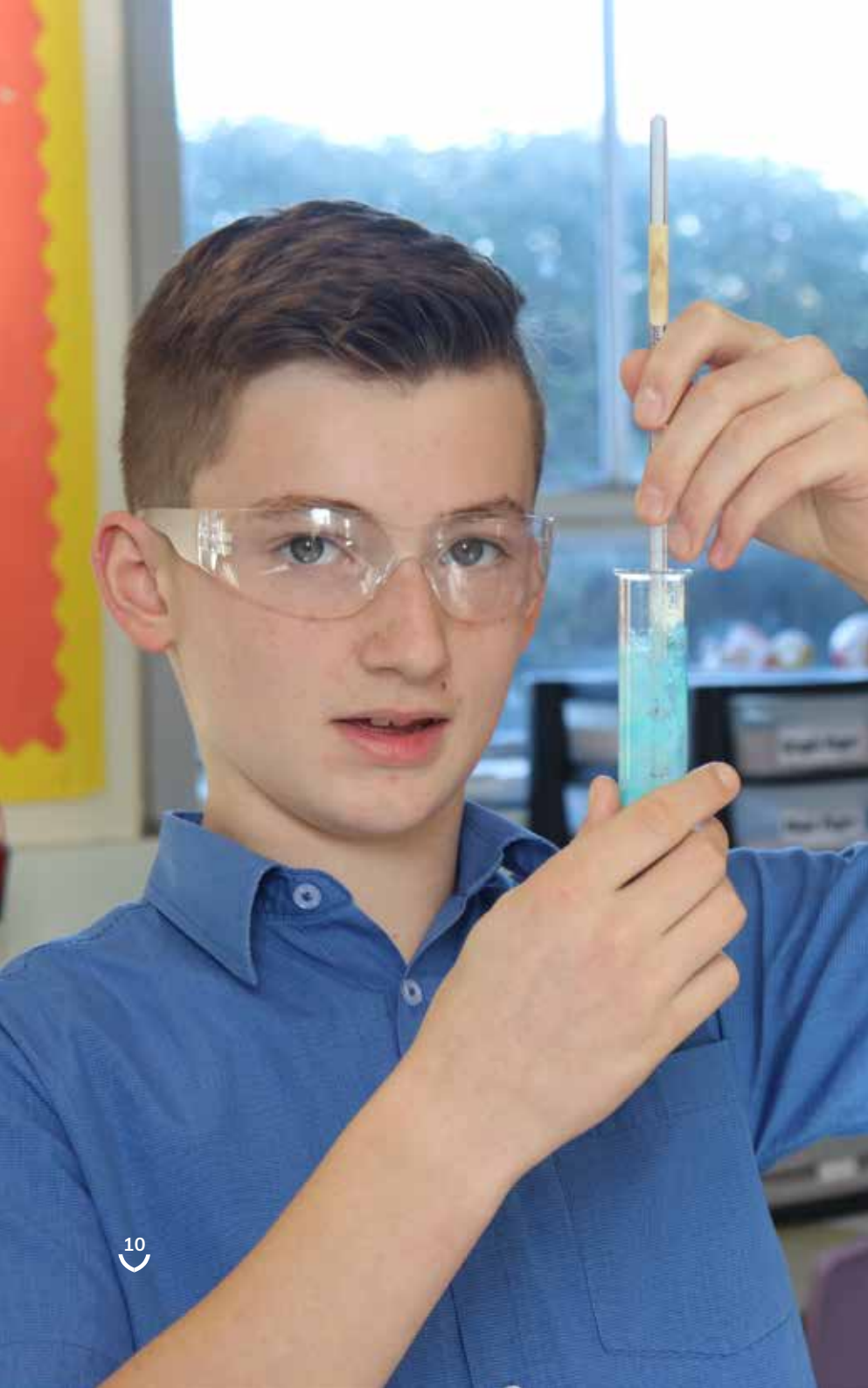
At Bristol we strive for quality education, quality teachers, quality facilities, quality trustees, quality students and quality parents through a system of highly developed routines and continuous improvement.

Mr Glenn Herbert

Lead Campus Administrator







Our History



Bristol Campus was first established in 1995 as Prospect School, in Brislington, Bristol, initially for Years 7-11 and then in 2004 provision was also made for Years 12 and 13. The school, although small at first, soon increased in size when students from Moorview School (serving the communities of Taunton and Bridgwater) joined in 2008.

In 2008 a Primary School was started in Swineford, Bristol providing for Years 3-6.

In September 2012, we purchased the present location in Wanswell, Berkeley and amalgamated the Primary and Secondary schools, offering education to students from Year 3-13.

In 2013, students from Chippenham joined the school, increasing our numbers.

Our present numbers are 135 students and 19 staff.

The Global House System



The Global House System is based around the ethos of inclusion and encouraging teamwork.

It is designed to reward academic work, effort, sporting achievements and good citizenship. It is the role of the House System to embrace all students and provide a climate of success for all.

The Global House System consists of three houses each with an assigned colour as shown below. These houses are run globally throughout our affiliated schools, meaning that we can encourage teamwork with other regions, not just within our campus, thus enhancing our students' desire to strive for their best, due to a much wider area of healthy and constructive competition.

Each student is assigned to a House and will normally remain in that House for his/her duration at the campus. Many house events and competitions are run which link to learning and help foster both teamwork and self-directed learning skills. The Global House System encourages healthy participation in activities and is well supported by staff and student leaders.



Charitable Fundraising



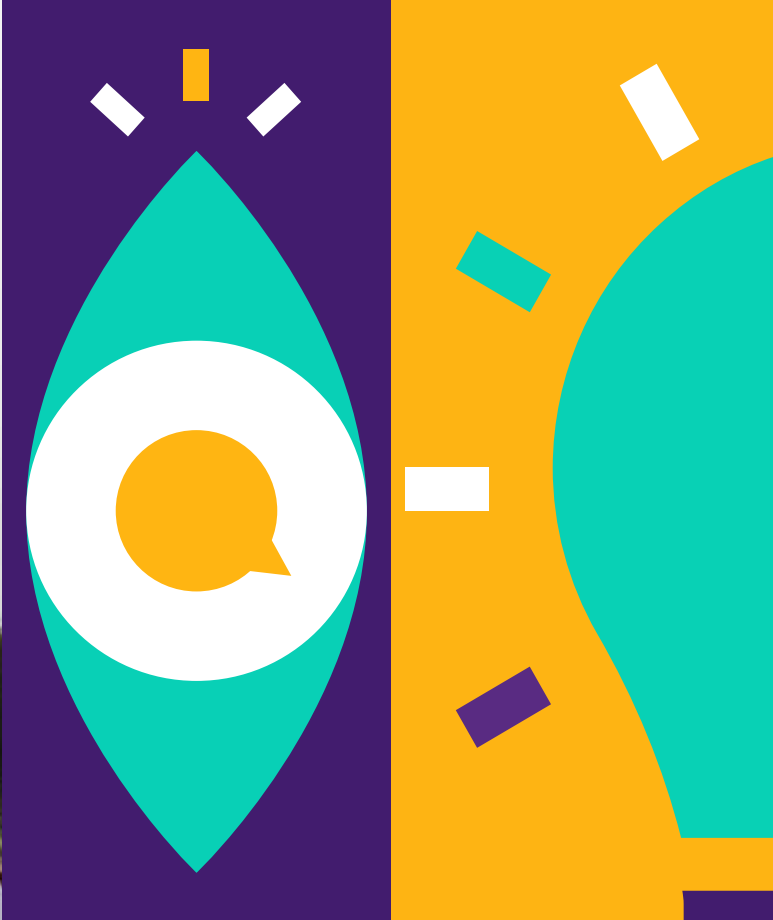
At Bristol Campus the whole community is committed to helping those less fortunate than ourselves.

There is a strong, student-led culture for fundraising and charity at Bristol. This academic year students have raised money for many charities. The majority of fundraising initiatives are student-led, with representatives from our student council coming up with ideas for school-wide events. Not only does each initiative raise hundreds of pounds for charity, but it also gives students valuable experience in organising and leadership skills.

Charitable donations made recently include:

- Breadstone Nursing Home
- Diabetes UK
- UNICEF
- RNLI
- Water Aid
- Starlight
- Winston's Wish
- Mercy Ships
- Help For Heroes
- Great Western Air Ambulance
- Poppy Appeal
- Cancer Research UK





“

The Staff at Bristol Campus are very supportive.

”

Our Curriculum



...wholly supports the School's ethos in promoting Christian values and provides a balance, ensuring students develop academically, aesthetically, morally and physically.

Bristol Campus has adopted the Curriculum Policy developed by OneSchool Global UK. The curriculum is designed to ensure that every student can realise their potential. The curriculum is assignment-based, enabling the self-directed ambition of the organisation to be fulfilled. All students follow a personalised and challenging curriculum.

Years 3-6

Art
Design & Technology
English
Geography
History
IT
LAMDA
Mathematics
MFL
Music
PSHE
Physical Education
Science

Years 7-8

Art
Citizenship
Design & Technology
English
Geography
History
IT
LAMDA
Mathematics
MFL
PSHE
Physical Education
Science

Years 9-11

Art, Craft & Design
Citizenship
Design & Technology
English
Food & Nutrition
French
Geography
History
ICT
LAMDA
Mathematics
PSHE
Physical Education
RSE
Science
Spanish

Years 12-13

All of our students progress to the sixth form and are offered a broad range of curriculum options designed to meet the abilities and aspirations of all our learners.

Cambridge International A Level qualifications are offered in Art & Design, Design & Technology, English, History, Geography, Mathematics, Accounts, Law, Business Studies, French and German, and Global Perspectives alongside Cambridge Technical qualifications in IT, Digital & Creative Media, and Business, a range of Level 2 qualifications, and Autodesk Fusion 360.

Additional subjects include Physical Education and PSHE, while courses such as Chef Skills, LAMDA Speaking in Public, London Institute of Banking and Finance and Extended Project Qualifications are available to students

Digital technology, including Zoom and Canvas platforms enable campuses to collaborate with other schools for subject delivery which enables students to study subjects that would not normally be economically viable

Xello and the Careers Advantage Programme also adds a unique and high quality vocational element to our curriculum which supports all students in gaining a better understanding of their career pathway and progression routes helping to ensure they are life-ready on graduation from OneSchool Global UK and excited about embarking on future post graduate qualifications.

Extra-Curricular activities are a strength of our school. Our students have the opportunity to collaborate on extra-curricular projects and activities at campus, regional and global level. Recent highlights including our termly Choir Festival, annual Public Speaking Competition and inter campus debating opportunities. Our extra-curricular offer is a key part of our curriculum and an area of continuous growth and development for OSUK.

OneSchool Global Awards



The aim of the OneSchool Global Awards programme is to motivate students to achieve across a range of personal and academic qualities. It is a citation based reward system which acknowledges exemplary student behaviour in relation to our values and skills.

The main focus for awarding a citation is based on OneSchool Global Values
Integrity, Care & Compassion, Respect, Responsibility, Commitment.

The value is demonstrated through a OneSchool Global Skill
Academic Achievement, Leadership, Involvement in School Activities, Diligence, Management Skills.



Integrity



Care & Compassion



Respect



Responsibility



Commitment



Citations are key rewards within OneSchool Global and contribute to the achievement of Bronze, Silver, Gold and Platinum Awards.

The OSG Award is inextricably linked to the OSG House Cup. House Points and citations celebrate students who go above and beyond in living our OneSchool Global Values and can demonstrate progression in OneSchool Global Skills.



**Hit the ground
running**

Career Advancement Programme



**Bridging the gap between school and work;
OneSchool Global UK offer a unique career
advancement plan to all our students and this is
proven to prepare them for the world of work:**

What is CAP?

The Career Advantage Programme (CAP) provides all students with the opportunity to gain the skills and aptitude to achieve rapid success in their post-school careers.

CAP does this by:

- Providing Career Fundamentals and Business Foundations to all students in Year 12 and 13.
- Analysing the capability of each student professionally to ensure the student can effectively complete the courses.
- Sponsorship for students to carry out extra-curricular studies in the last two years of school.

The CAP curriculum

All students in Year 12 complete a Career Fundamentals course which is a global standard for employers. For CAP students, the diploma-type courses provide a theoretical and academic rigour which underpins the students' academic programme and the career skills based study provides practical, real-world approaches to learning and helps them to develop skills and competencies required for lifelong learning.

Visit the website to find out more

<https://www.oneschoolglobal.com/cap/>

Beyond the classroom



Why is CAP Important?

There is an increasing awareness globally that high school studies alone are not adequately preparing students for the modern workforce. The Career Advantage Programme is aimed at equipping our children with the necessary skills to bring positive benefits to our businesses from day one.

Important for students:

- improving their employment opportunities
- improving the potential of earning a higher income on graduation
- empowering rapid progress along their career path

Important for businesses:

- higher value employees that are useful from day one
- employees with an established work ethic; self-starters, self-finishers, self-motivators
- employees that understand the value of study and training

“The innovative approach to the curriculum, teaching and learning is what makes this school outstanding because it enables all pupils to make excellent progress and achieve their very best”



- Business Owner



Policies and Documents



Bristol Campus is committed to the safeguarding and protection of its students in line with national guidance. We endeavour to provide a safe and welcoming environment where all children are safe, respected and valued, as well as being underpinned by the following two key principles:

- A child-centred approach; for services to be effective they should be based on a clear understanding of the needs and views of children.
- Everyone employed and who comes into contact with children at Bristol Campus has a responsibility in relation to safeguarding.

At Bristol Campus we listen to students and maintain a child-centred approach to Safeguarding and Child Protection. We provide a safe environment for students both under and over 18, especially those who are considered vulnerable. All of our Policies are available upon request from our school office or via email: bristol@uk.oneschoolglobal.com

Administration of Medicines Policy

Admissions Policy

Anti-Bullying Policy

Attendance Policy

Behaviour Management Policy

Complaints Procedure

Curriculum Policy

EAL Policy

Equal Opportunities Policy

Exclusions Policy

Fire Safety (Prevention) Policy

First Aid Policy

Health & Safety Policy

Learning Support (SEND) Policy

Risk Assessment Policy

RSE Policy

Safeguarding & Child Protection Policy

Safer Recruitment Policy

Supervision of Students Policy

Additionally, the particulars of the arrangements for promoting student health and safety on educational trips and visits are available from the school office on request.

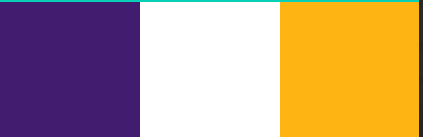
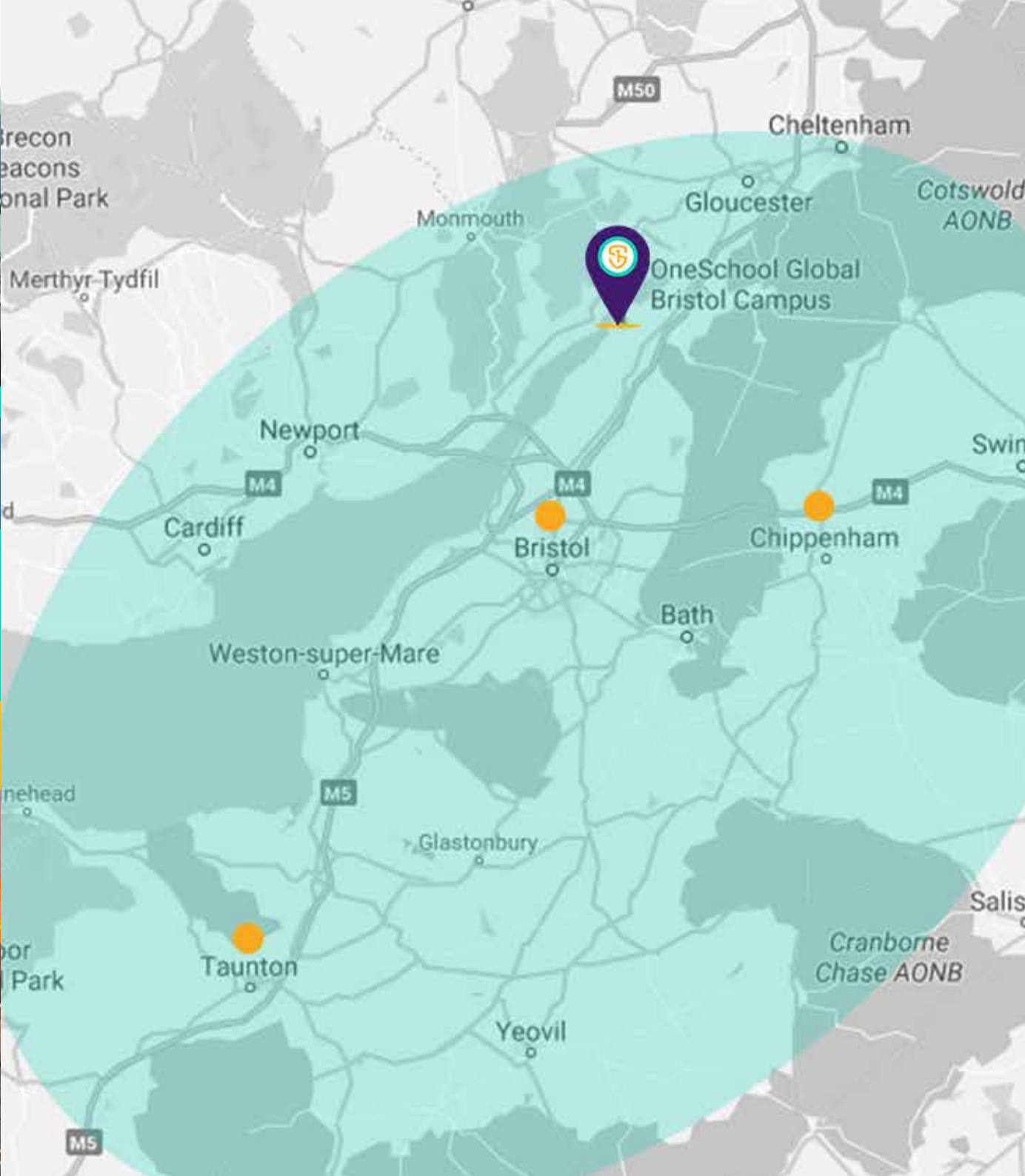
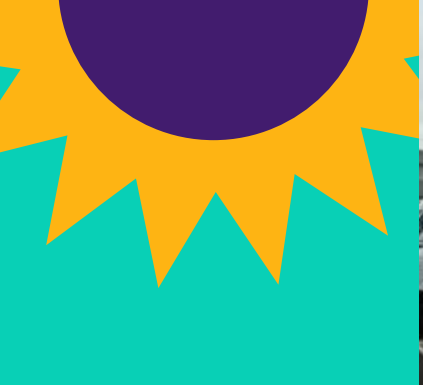
Teachers and Staffing



All OneSchool Global UK Bristol Campus teachers hold qualifications applicable to their post. In the absence of qualifications in some practical subjects previous experience will be considered if applicable. All staff, governors and volunteers have been subject to regulatory safer recruitment checks.

Name	Assigned Responsibilities	Qualifications
Rachel Amphlett	Business Studies, IT, BTEC, PE	BA (Hons)
Jackie-Manners Astley	Campus Admin Officer	-
Harriet Bailey	Primary Teacher Years 3 & 4	BSc (Hons)
Andrew Bernice	Assistant Principal (T&L) & KS5 Lead RHOD for History, History, PSHE, Deputy Safeguarding Lead Citizenship, History	BA (Hons)
Emma Bryson	Campus Principal	BA in English, PGCE and Certificate of Headship
Paige Cowley	French, English, PE, LSCo	BA (Hons)
Anne-Marie Dunn	English, Designated Safeguarding Lead Assistant Principal (Wellbeing) & KS2 Lead	BA (Hons)
Adrian Durham	RHOD for Science	BSc (Hons)
Natalie Emmott	Primary Teacher Years 5&6	BA Hons

Name	Assigned Responsibilities	Qualifications
Jane Greatorex	Senior Campus Administration Officer	-
Emma Hart	Cross Phase Teaching Assistant, PE	-
Robert Naylor	Assistant Principal (Progress) & KS3/4 Lead Maths, Deputy Safeguarding Lead, IT Support	BSc (Hons)
Debbie Paxford	Exams Officer	-
Natasha Peacey	Campus Admin Officer	-
Amanda Pugh	LSA	-
Sarah Read	Chef Skills, Textiles	BA
Elizabeth Rosser	Snr Mental Health Lead, HLTA	-
Ian Sandell	Premises Manager	-
Joy Tregoning	Art Teacher	BA (Hons)
Alex Windmill	PE Teacher	BA (Hons)



School Information



OneSchool Global UK Bristol Campus

Wanswell, Berkeley, Gloucestershire GL13 9RS

- Tel: 01453 511282
- bristol@uk.oneschoolglobal.com
- oneschoolglobal.com/bristol

Monday to Friday 08:45 - 15:00

Proprietor: **OneSchool Global UK**

OSG UK No: 603
Examination Centre No. 50736
Charity No: 1181301
DfE No: 916/6002

Complaints and Exclusions (2022-2023):

There were no complaints and 4 exclusions during this academic year 2022-2023.

CA Team Mr Glenn Herbert (Lead CA/Safeguarding)
Mr Lloyd Hamilton (Finance)

CA Board Mr Gerry Leflaive – Building/H&S
Mr Reuben Holley – Finance
Mr Connor Mitchell – HR
Mr George Turner
Mr Pete Small

Campus Principal Mrs Emma Bryson

OneSchool Global UK Representatives Mr Terry Mitchell
Mrs Sarah Bennett

Holiday/Out of Hours Contact Mr Lloyd Hamilton Tel: 07848 459445
Email: lloyd.hamilton@uk.oneschoolglobal.com

Correspondence for the Chair of the Trustees should be addressed to the Principal Office Mr Terry Mitchell
OneSchool Global UK Bristol Campus
The Precinct Warwick
Poseidon Way
Warwick
CV34 6BY

For further information and the school calendar please visit our website: oneschoolglobal.com/bristol
Visit the OneSchool Global UK website: www.oneschoolglobal.com



The children were so creative and had worked so hard with their stalls. They created a fantastic atmosphere. Thank you for all the hard work by you and the children. £600 is an amazing blessing!

Letter from The Pioneers' Project CIC (Local charity)

It is never a problem getting my son up for school, he likes going as it is where his friends are and the atmosphere at the school is great.

Parent

Having my children at this school means I can be sure they are in a safe and positive learning environment. I am also confident they will receive the support they need to achieve their best possible grades.

Parent







OneSchool Global

Learning to learn

OneSchool Global UK Bristol Campus

Wanswell
Berkeley
Gloucestershire
GL13 9RS
Tel: 01453 511282 / 01453 511940
Email: bristol@uk.oneschoolglobal.com

OneSchool Global UK

The Precinct Warwick
Poseidon Way
Warwick
CV346BY
Tel. 0330 055 5600
Email: support@uk.oneschoolglobal.com