



Lancaster Campus Prospectus

2023-2024




Introduction

This School is a registered and accredited Independent School established to provide a quality education to the UK community and, in particular, to Brethren students.

The School's Ethos, Values Statement and Guiding Principles govern the School, and are reflected in a series of policies, procedures and handbooks which have been developed to meet statutory and registration requirements and are to be adhered to in all aspects of the operation of the School.

Contents



About OneSchool Global	4
OneSchool Global Ethos	5
OneSchool Global Vision and Mission Statements	6
OneSchool Global Values	7
Welcome	8
History	10
Global House System	11
Our Curriculum	14
OneSchool Awards	15
Career Advancement Programme	16
Policies	18
Teachers and Staffing	19
School Information	20
Testimonials	22

About OneSchool Global UK

OneSchool Global is a global school, with over 130 campuses in 20 countries, including cities such as New York, Paris, Sydney, Rome, Auckland, Copenhagen, Los Angeles and San Francisco.

With an innovative approach to learning, delivered in cutting-edge, technology-empowered physical and digital learning environments, OneSchool Global is preparing life-ready students who learn how to learn.

Our self-directed learning model places students at the centre of all that we do. We challenge traditional and dated pedagogy and embrace technology to deliver the best possible learning outcomes for our students.

OneSchool Global recruits and develops high quality teachers. Our teachers partner with our students in their learning and rather than being considered the 'sage on the stage', play a 'guide on the side role' to support students.

Our in-house Teacher Academy provides teachers with the training they need to be the best they can be. We provide teachers with the skills they need to be successful at OneSchool Global and skills that will make them highly capable and competent in teaching in a digital world.

OneSchool Global is a school that lives its values and is guided by the School's ethos. The School is generously supported via the donation of time and financial support from members of the Plymouth Brethren Christian Church.



[Click on the OneSchool logo to learn more about how this cutting-edge schooling system was inspired and how this awesome vision is being realised.](#)





OneSchool Global Ethos

At OneSchool Global, we are committed to a culture where students are encouraged to develop their full potential and acquire the discipline of learning how to learn while upholding Christian teachings and beliefs.

The truth and authority of the Holy Bible and strong family values underpin the commitment of the School to provide quality in every facet of education - curriculum, teachers, facilities, management, and discipline - in a safe and caring environment.

OneSchool Global Vision Statement



A global education ecosystem that develops life-ready students who learn how to learn and achieve.

To ensure our students are life-ready, we need to teach differently. To be life-ready in today's world, our students need to learn how to learn. To be life ready, our students need to develop independent and critical thinking skills, and skills such as teamwork and collaboration

It is these skills that form an aptitude base that allows a student to adapt. Most importantly, these critical skills are transferable. When industry changes, when entire fields of work and job types are no longer required, it will be the life-ready, critical thinkers who stand the test of time and find new ways to add value.

We are prepared to do things differently at OneSchool Global to deliver on this vision. We challenge traditional and outdated pedagogical models. Our learning centres, the way we embed technology in them, and ultimately our students, are a testament to this.

OneSchool Global Mission Statement



“Learning to Learn”

The School is committed to creating and delivering learning programmes that meet the educational needs of each student, and to nurture the attitudes and skills necessary for the continual learning and personal growth throughout life.

“Learning to Learn” means to use learning as a tool whereby students are equipped with the ability to think critically, process information perceptually, analyse data accurately, and evaluate situations intelligently in order that they fulfil their true potential.



OneSchool Global Values



At OneSchool Global each student, parent and staff member shall uphold the values of the School which include:

Integrity – uprightness, honesty and decorous conduct, governed by the Holy Bible,

Care and Compassion – kindness, consideration and generosity to all,

Respect – for all people, property, opinions and those in authority,

Responsibility – for our actions, progress and the environment and,

Commitment – to self-discipline and the pursuit of excellence.





Welcome Message



Welcome to OneSchool Global UK Lancaster Campus

Our school is located on the edge of Hornby village in the beautiful Lune Valley. We have excellent communication links being just minutes from the M6 and located just off the A638 Lancaster to Kirkby Lonsdale Road.

The school has been modernised and re-furnished to a high standard and we are constantly improving the learning environment for our students. We have over 11 acres of school grounds containing grass and all weather pitches for sports and recreation, purpose built Science, Design Technology and Food Technology suites alongside our classrooms, SDL area and ICT suites which all have views across the stunning Lune Valley.

Our results are significantly above the national average and we strive to constantly to produce mature and responsible students following the OneSchool Global UK motto of 'Learning to Learn'. The high quality facilities and location have resulted in the school attracting staff that are of an equally high quality and from whom we expect the highest levels of commitment to teaching and learning.

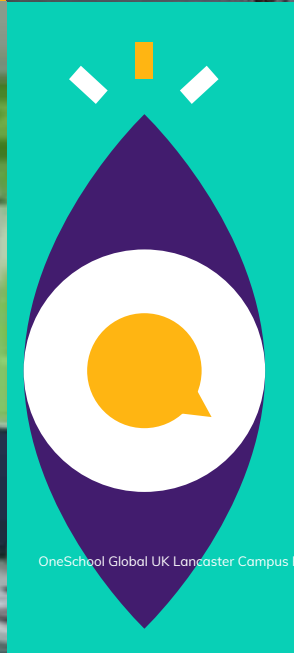
Parents are encouraged to take an interest in all aspects of their children's education and we aim to foster a working relationship with parents where communication is open and frequent.

Regular reports on the progress and attainment of students are sent home and parents are invited to come and discuss their children's progress at various points throughout the year.

We strive at all times for excellence in all that we do and I hope that this prospectus will give you a flavour of what we are achieving at Lancaster Campus.

Mr Jason Simpson
Lead Campus Administrator







Our History



OneSchool Global UK Lancaster Campus has occupied the current site since September 2011 and caters for the children from the Brethren communities of Lancaster and Preston.

Previously the school was located at Oak House in Leyland and was known as Whinfield; the name coming from the previous site where the first school was situated on Whinfield Lane in Preston.

By 2011 the site at Leyland had become too restrictive and lacked the play areas and sports facilities that a rapidly expanding school population required.

Although we were in many ways sad to leave the Whinfield site, as it had provided a quality education for many students, we jumped at the opportunity to purchase the Lancaster site which had previously been a county council secondary school and came with many facilities that we only dreamt about at Whinfield.

The school was purchased in early 2011 and completely re-furbished at considerable expense in terms of money and more importantly in volunteer time to deliver to us an outstanding educational facility where students have every opportunity to fulfil their potential.

The Global House System



The Global House System is based around the ethos of inclusion and encouraging teamwork.

It is designed to reward academic work, effort, sporting achievements and good citizenship. It is the role of the House System to embrace all students and provide a climate of success for all.

The Global House System consists of three houses each with an assigned colour as shown below. These houses are run globally throughout our affiliated schools, meaning that we can encourage teamwork with other regions, not just within our campus, thus enhancing our students' desire to strive for their best, due to a much wider area of healthy and constructive competition.

Each student is assigned to a House and will normally remain in that House for his/her duration at the campus. Many house events and competitions are run which link to learning and help foster both teamwork and self-directed learning skills. The Global House System encourages healthy participation in activities and is well supported by staff and student leaders.



Charitable Fundraising



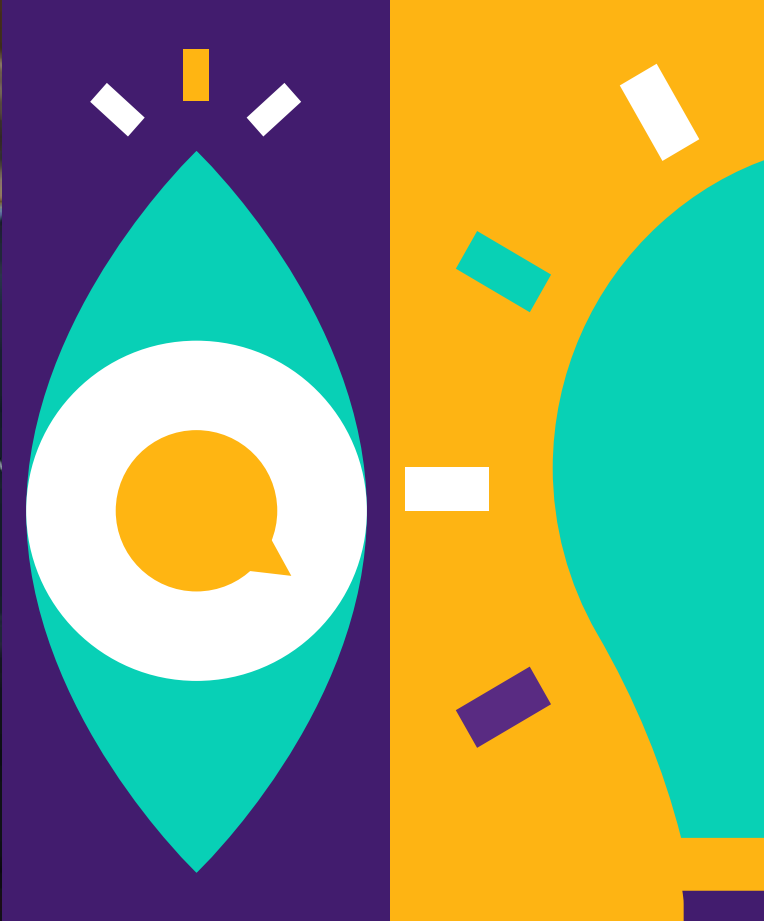
At Lancaster Campus the whole community is committed to helping those less fortunate than ourselves.

Students are encouraged to participate in the wider community. Charity is core to our ethos and fundraising activities are encouraged. These activities develop a responsible attitude and an understanding of the ramifications of actions upon environments and humanity.

Charitable donations made recently include:

- Mercy Ships UK
- Bowland Pennine Mountain Rescue Team
- Poppy Appeal
- Help for Heroes
- Great Ormond Street Hospital Children's Charity
- Shelter, National Campaign For Homeless People Limited
- St. John's Hospice North Lancashire And South Lakes
- Genetic Disorders UK
- Parkinson's UK
- Cancer Research UK
- The Royal National Lifeboat Institution
- British Heart Foundation
- Macmillan Cancer Support





“

Many thanks for all you have done to get the best out of the children.

”

Our Curriculum



...wholly supports the School's ethos in promoting Christian values and provides a balance, ensuring students develop academically, aesthetically, morally and physically.

Lancaster Campus has adopted the Curriculum Policy developed by OneSchool Global UK. The curriculum is designed to ensure that every student can realise their potential. The curriculum is assignment-based, enabling the self-directed ambition of the organisation to be fulfilled. All students follow a personalised and challenging curriculum.

Years 3-6

Art
Design & Technology
English
Geography
History
IT
LAMDA
Mathematics
MFL
Music
PSHE
Physical Education
Science

Years 7-8

Art
Citizenship
Design & Technology
English
Geography
History
IT
LAMDA
Mathematics
MFL
PSHE
Physical Education
Science

Years 9-11

Art, Craft & Design
Citizenship
Design & Technology
English
Food & Nutrition
French
Geography
German
History
ICT
LAMDA
Mathematics
PSHE
Physical Education
RSE
Science
Spanish

Years 12-13

All of our students progress to the sixth form and are offered a broad range of curriculum options designed to meet the abilities and aspirations of all our learners.

Cambridge International A Level qualifications are offered in Art & Design, Design & Technology, English, History, Geography, Mathematics, Accounts, Law, Business Studies, French and German, and Global Perspectives alongside Cambridge Technical qualifications in IT, Digital & Creative Media, and Business, a range of Level 2 qualifications, and Autodesk Fusion 360.

Additional subjects include Physical Education and PSHE, while courses such as Chef Skills, LAMDA Speaking in Public, London Institute of Banking and Finance and Extended Project Qualifications are available to students.

Digital technology, including Zoom and Canvas platforms enable campuses to collaborate with other schools for subject delivery which enables students to study subjects that would not normally be economically viable.

Xello and the Careers Advantage Programme also adds a unique and high quality vocational element to our curriculum which supports all students in gaining a better understanding of their career pathway and progression routes helping to ensure they are life-ready on graduation from OneSchool Global UK and excited about embarking on future post graduate qualifications.

Extra-Curricular activities are a strength of our school. Our students have the opportunity to collaborate on extra-curricular projects and activities at campus, regional and global level. Recent highlights including our termly Choir Festival, annual Public Speaking Competition and inter campus debating opportunities. Our extra-curricular offer is a key part of our curriculum and an area of continuous growth and development for OSGUK.

OneSchool Global Awards



The aim of the OneSchool Global Awards programme is to motivate students to achieve across a range of personal and academic qualities. It is a citation based reward system which acknowledges exemplary student behaviour in relation to our values and skills.

The main focus for awarding a citation is based on OneSchool Global Values

Integrity, Care & Compassion, Respect, Responsibility, Commitment.

The value is demonstrated through a OneSchool Global Skill

Academic Achievement, Leadership, Involvement in School Activities, Diligence, Management Skills.



Integrity



Care & Compassion



Respect



Responsibility



Commitment



Citations are key rewards within OneSchool Global and contribute to the achievement of Bronze, Silver, Gold and Platinum Awards.

The OSG Award is inextricably linked to the OSG House Cup. House Points and citations celebrate students who go above and beyond in living our OneSchool Global Values and can demonstrate progression in OneSchool Global Skills.

Career Advancement Programme



Bridging the gap between school and work; OneSchool Global UK offer a unique career advancement plan to all our students and this is proven to prepare them for the world of work:

What is CAP?

The Career Advantage Programme (CAP) provides all students with the opportunity to gain the skills and aptitude to achieve rapid success in their post-school careers.

CAP does this by:

- Providing Career Fundamentals and Business Foundations offered to all students in Year 12 and 13.
- Analysing the capability of each student professionally to ensure the student can effectively complete the courses
- Sponsorship for students to carry out extra-curricular studies in the last two years of school.

The CAP curriculum

All students in Year 12 complete a Career Fundamentals course which is a global standard for employers. For CAP students, the diploma-type courses provide a theoretical and academic rigour which underpins the students' academic programme and the career skills-based study provides practical, real-world approaches to learning and helps them to develop skills and competencies required for lifelong learning.

Visit the website to find out more

<https://www.oneschoolglobal.com/cap/>



**Hit the ground
running**

Beyond the classroom



Why is CAP Important?

There is an increasing awareness globally that high school studies alone are not adequately preparing students for the modern workforce. The Career Advantage Programme is aimed at equipping our children with the necessary skills to bring positive benefits to our businesses from day one.

Important for students:

- improving their employment opportunities
- improving the potential of earning a higher income on graduation
- empowering rapid progress along their career path

Important for businesses:

- higher value employees that are useful from day one
- employees with an established work ethic; self-starters, self-finishers, self-motivators
- employees that understand the value of study and training

“The innovative approach to the curriculum, teaching and learning is what makes this school outstanding because it enables all pupils to make excellent progress and achieve their very best”



- Business Owner



Policies and Documents



Lancaster Campus is committed to the safeguarding and protection of its students in line with national guidance, 'Keeping Learners Safe'. We endeavour to provide a safe and welcoming environment where all children are respected and valued, as well as being underpinned by the following two key principles:

- A child-centred approach; for services to be effective they should be based on a clear understanding of the needs and views of children.
- Everyone employed and who comes into contact with children at Lancaster Campus has a responsibility in relation to safeguarding.

At Lancaster Campus we listen to students and maintain a child-centred approach to Safeguarding and Child Protection. We provide a safe environment for students both under and over 18, especially those who are considered vulnerable.

Our Statutory Policies are available upon request from our school office or via email lancaster@uk.oneschoolglobal.com

Administration of Medicines Policy

Admissions Policy

Anti-Bullying Policy

Attendance Policy

Behaviour Management Policy

Complaints Procedure

Curriculum Policy

EAL Policy

Equal Opportunities Policy

Exclusions Policy

Fire Safety (Prevention) Policy

First Aid Policy

Health & Safety Policy

Learning Support (SEND) Policy

Risk Assessment Policy

RSE Policy

Safeguarding & Child Protection Policy

Safer Recruitment Policy

Supervision of Students Policy

Additionally, the particulars of the arrangements for promoting student health and safety on educational trips and visits are available from the school office on request.

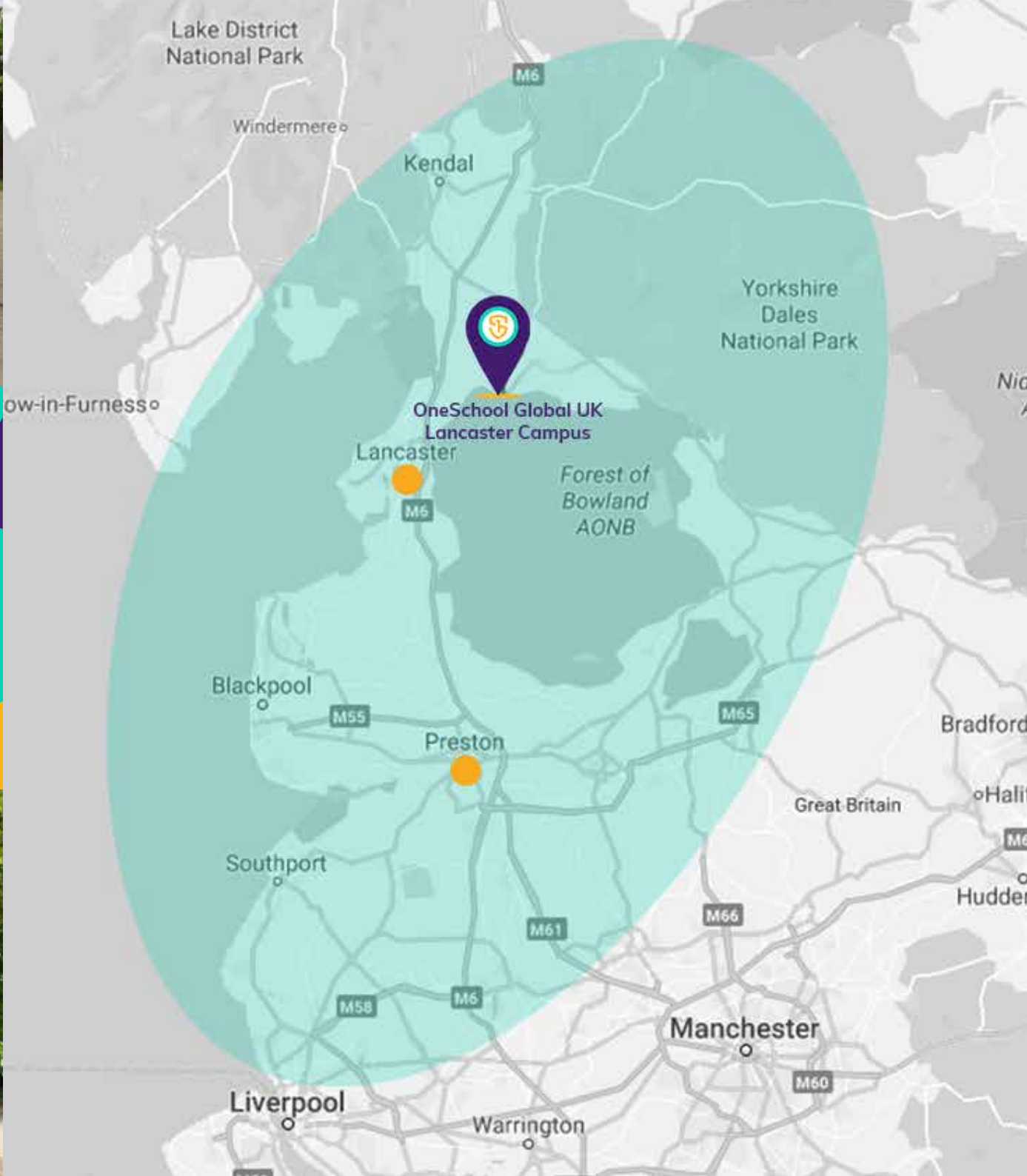
Teachers and Staffing



All OneSchool Global UK Lancaster Campus teachers hold qualifications applicable to their post. In the absence of qualifications in some practical subjects previous experience will be considered if applicable. All staff, governors, trustees and volunteers have been subject to regulatory safer recruitment checks.

Name	Assigned Responsibilities	Qualifications
Mr Mark Blundell	RHOD for Level 2 and Vocational courses, Construction and the Built Environment, Creative iMedia, Design Technology and PE teacher Health and Safety Officer	BSc, QTS
Mrs Heather Bowker	Campus Administration Officer	-
Ms Virginia Eckhoff	Teaching Assistant	LLB (Hons) and HLTA
Mrs Rachel Fisher	Invigilator	BSc(Hons), QTS, PHD
Mrs Clare Hartley	RHOD for Citizenship English and Citizenship Teacher Joint Year 11 Progress Tutor	BA (Hons), PGCE, QTS
Mr Timothy Lambert	Premises Manager	-
Mrs Michelle Mobbs	Science Teacher ARHOD for Science KS4&5 Lead Years 12 & 13 Progress Tutor	BSc(Hons), QTS, PGCE, MSc
Mrs Gráinne Morgan	Assistant Campus Principal Designated Safeguarding Lead Learning Support Coordinator ARHOD for PE Girls PE and Food and Nutrition Teacher Joint Year 11 Progress Tutor Deputy Exams Officer MACO	BA (Hons), QTS, PGCE
Ms Emma Morton	Exams Officer	-

Name	Assigned Responsibilities	Qualifications
Miss Caron Murgatroyd	KS2&3 Lead Years 3 to 6 Teacher	BA (Hons), QTS
Mrs Zoë Neesham	Campus Principal Deputy Designated Safeguarding Lead Deputy Exams Officer	BA (Hons), PGCE, QTS
Miss Bethany Sloan	Geography Teacher Digital Learning Coach	MSci (Hons), PGCE, QTS
Mrs Virginia Eckhoff	Teaching Assistant	-
Mrs Amy Swarbrick	ARHOD for LAMDA English and LAMDA Teacher Year 7 Progress Tutor	BA (Hons), QTS, PGCE
Mr Ian Walker	Invigilator	-
Miss Emma Riley	Learning Support Assistant	-



School Information



OneSchool Global UK Lancaster Campus

Melling Road, Hornby, Lancaster
LA2 8LH

- Tel: 015242 22159
- lancaster@uk.oneschoolglobal.com
- oneschoolglobal.com/lancaster

Monday to Friday 08:45 - 15:00

Proprietor: **OneSchool Global UK**

OSG UK No: 214
Examination Centre No. 46653
Charity No: 1181301
DfE No: 888/6054

Complaints and Exclusions (2022-2023):

There were no complaints or exclusions during this academic year 2022-2023.

For further information and the school calendar please visit our website: oneschoolglobal.com/lancaster
Visit the OneSchool Global UK website: oneschoolglobal.com

CA Team	Mr Jason Simpson (Lead CA) Mr Nick Whiley
Campus Board Members	Mr Terry James Mr Leon White Mr Daniel Fishwick
Campus Principal	Mrs Zoë Neesham
OneSchool Global UK Representatives	Mr Bruce Haughton Mrs Chloe O'Mara
Holiday/Out of Hours Contact	Mr Stefan Devenish Tel: 07925 524481
Correspondence for the Chair of the Trustees should be addressed to the Principal Office	Mr Bruce Haughton OneSchool Global UK Lancaster Campus The Precinct Warwick PoseidonWay Warwick CV34 6BY



It is a brilliant school. I am extremely grateful for the atmosphere and safe environment where my children are taught.. Communication, particularly from the head teacher is very good and much appreciated.

Parent

Communications also continues to improve particularly newsletters.. Great teachers.

Parent

*The feeling of community between our students, staff and parents is really evident.
I enjoy being encouraged to experiment and rethink our teaching.*

Teacher

*Genuine desire to improve school shown by all staff.
Always excellent manners and respect from students.*

Teacher



26 hours



OneSchool Global

Learning to learn

OneSchool Global UK Lancaster Campus

Melling Road
Hornby
Lancaster
LA2 8LH
Tel: 015242 22159
Email: lancaster@uk.oneschoolglobal.com

OneSchool Global UK

The Precinct Warwick
Poseidon Way
Warwick
CV346BY
Tel. 0330 055 5600
Email: support@uk.oneschoolglobal.com